

Introducing

SOTO™ II



SOTO II Worktools are the result of research conducted over the past 2 years by Details and IDEO to thoroughly understand mobile work from the user perspective. What are the challenges – where do the friction points occur. From their interviews and observations came product concepts that would welcome a user to an environment, to enhance the working experience and give back to the users.

A Steelcase Company

details®

Available Now



Cable Clip attaches simply to the worksurface edge to keep data cables where they are needed—on the desktop for quick connection—and prevents them from falling behind the desk or into the cableway.

Style Number: DCCLIP
Finish: Arctic White, Sterling Dark Solid



Personal Hook attaches simply to the edge of a worksurface providing a place to put lightweight bags, umbrella, headphones, or keys where they are handy and kept off the floor or worksurface.

Style Number: DPHOOK
Finish: Arctic White, Sterling Dark Solid



Eyesite™ Flat Panel Monitor Arms for FrameOne give workers control over placement of their monitors to insure ergonomics is not compromised as well as free up precious worksurface space. Eyesite is available to support one or multiple flat panel monitors in one-sided or back-to-back installations, to help make work visual and collaborative.

Style Numbers:

FPAC1FO	Eyesite Single Standard Crank Adj. - FrameOne Mount
FPAC2FO	Eyesite Dual Standard Crank Adj. - FrameOne Mount
FPAEC1FO	Eyesite Single Ext. Crank Adj. - FrameOne Mount
FPAEC2FO	Eyesite Dual Ext. Crank Adj. - FrameOne Mount
FPAS1O1FO	Eyesite Static 1 over 1 - FrameOne Mount
FPALC1FO	Eyesite Single Standard Crank Adj. w/Laptop Support - FrameOne Mount
FPALC2FO	Eyesite Dual Standard Crank Adj. w/ Laptop Support - FrameOne Mount
FPAELC1FO	Eyesite Single Ext. Crank Adj. w/ Laptop Support - FrameOne Mount
FPAELC2FO	Eyesite Dual Ext. Crank Adj. w/ Laptop Support - FrameOne Mount
FPCFO	Eyesite FrameOne Bracket



Vertical Processor Sling for FrameOne protects CPU from damage by securely holding it up off the floor.

Style Number: CPRSLFO

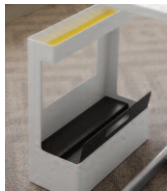
Available May 2011



FYI® Single Flat Panel Monitor Arm with FrameOne Bracket gives workers control over placement of their monitors to insure ergonomics is not compromised as well as free up precious worksurface space. FYI is available to support one or multiple flat panel monitors to help make work visual and collaborative.

Style Number: FPASINGLEFO

Available July 2011



Mobile Caddy anticipates user's needs for a place to stow their personal items and work bag. The open structure allows for quick, easy packing and unpacking. In-line casters allows the Mobile Caddy to be easily pulled out to accept bags or backpacks, while providing the user a sense of boundary when working at a shared bench.

Style Number: DSMC
Finish: Arctic White Plastic, Cogent Connect Fabric



Functional Screen combines organization and privacy. The screen offers an integrated envelope in which to keep frequently used documents, books or other materials. Its height delivers increased privacy and sense of boundary. Easily field changeable from right to left facing.

Style Number: DSFS
Finish: Arctic White Plastic



Personal Pocket provides a place to store papers, files or other frequently used items. The Personal Pocket can be used freestanding as a single unit or ganged in multiples to create a desktop organizer. It also attaches easily to both the Functional Screen and Mobile Caddy.

Style Number: DSPP
Finish: Black Plastic

Available November 2011



Launch Pad, available in both powered and non-powered versions, gives users a desktop area to conveniently hold mobile devices and other personal items. Three outlets on each side give bench workers easy access to power to keep devices charged and running. Launch Pad can be placed anywhere along the worksurface to define boundary between work areas.

Style Number: DSLPLP - Powered & DSLPLNP - Non-powered
Finish: Arctic White Plastic, Cogent Connect Fabric



Launch Pad Divider Screen allows the Launch Pad to be easily divided giving user's individual space and privacy between workstations. Easily installed or removed, the Launch Pad can convert from a shared product to user owned in seconds.

Style Number: DSLPDS
Finish: TBD

Cogent Connect Fabric Swatch Card Adstock number: 11-0002050

For further information, please go to the Details website details-worktools.com or call 800.833.0411

P.O. Box 1967 / CD-5E Grand Rapids, MI 49501-1967

©2011 Steelcase Inc. All rights reserved. 04/11