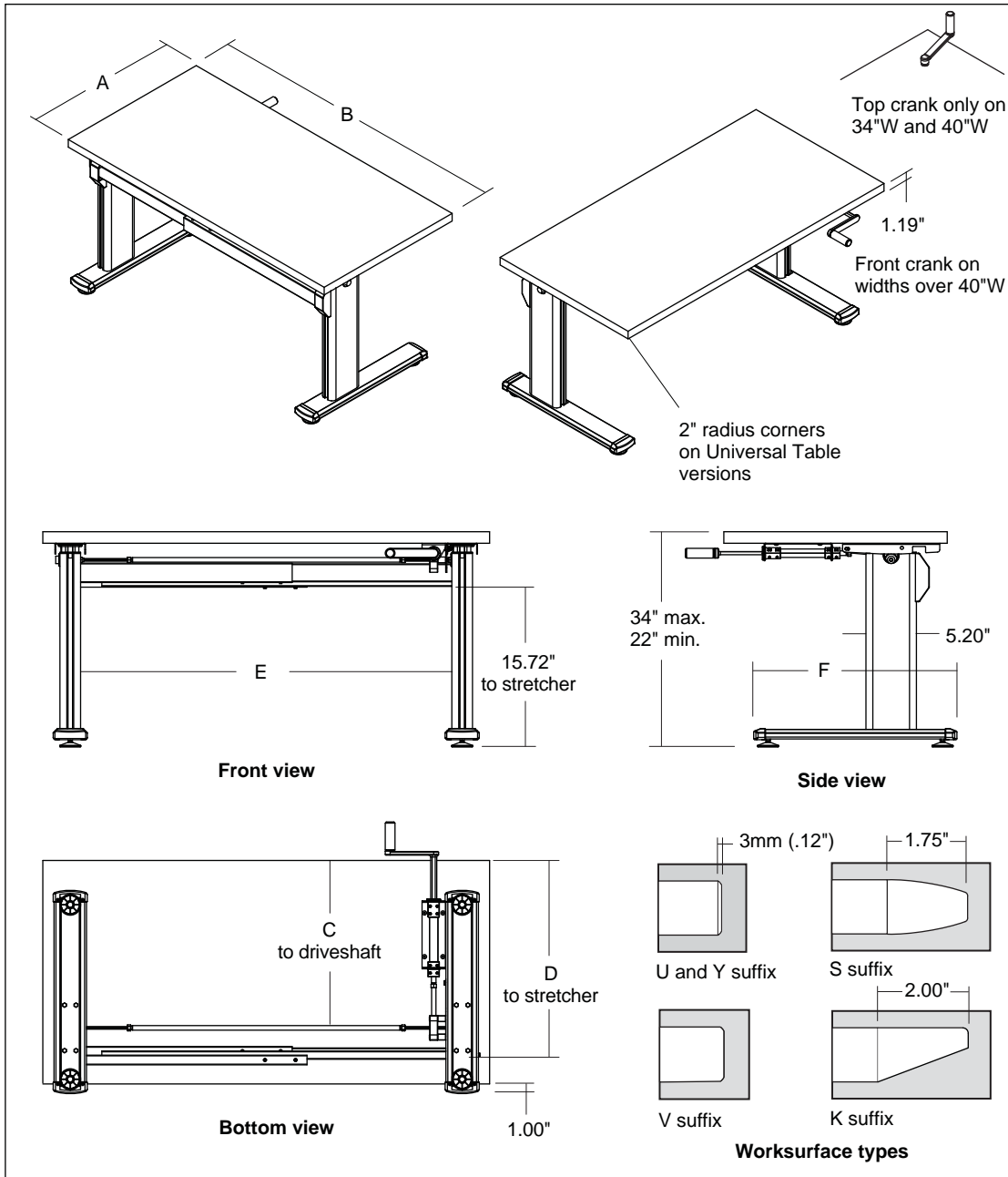


Series 3 Adjustables Tables

Dimensioned Line Drawings Rectangular Tables



Style No.	Dim. A	Dim. B	Dim. C	Dim. D	Dim. E	Dim. F
A3RQ342323	23.00"	34.00"	16.00"	18.15"	26.22"	21.00"
A3RQ402323	23.00"	40.00"	16.00"	18.15"	32.22"	21.00"
A3RQ462323	23.00"	46.00"	16.00"	18.15"	38.22"	21.00"
A3RQ522323	23.00"	52.00"	16.00"	18.15"	44.22"	21.00"
A3RQ582323	23.00"	58.00"	16.00"	18.15"	50.22"	21.00"
A3RQ642323	23.00"	64.00"	16.00"	18.15"	56.22"	21.00"
A3RQ702323	23.00"	70.00"	16.00"	18.15"	62.22"	21.00"
A3RQ762323	23.00"	76.00"	16.00"	18.15"	68.22"	21.00"
A3RQ342929	29.00"	34.00"	17.55"	20.60"	26.22"	26.00"
A3RQ402929	29.00"	40.00"	17.55"	20.60"	32.22"	26.00"
A3RQ462929	29.00"	46.00"	17.55"	20.60"	38.22"	26.00"
A3RQ522929	29.00"	52.00"	17.55"	20.60"	44.22"	26.00"
A3RQ582929	29.00"	58.00"	17.55"	20.60"	50.22"	26.00"
A3RQ642929	29.00"	64.00"	17.55"	20.60"	56.22"	26.00"
A3RQ702929	29.00"	70.00"	17.55"	20.60"	62.22"	26.00"
A3RQ762929	29.00"	76.00"	17.55"	20.60"	68.22"	26.00"

Note: Add the following suffixes to specify worksurface type:

- "U" for Universal Table
- "Y" for Universal Systems
- "K" for Knife Edge
- "S" for Urethane Profile
- "V" for Wood Veneer Profile



features



construction



materials



print this page

details[®]
A STEELCASE COMPANY

Series 3 Adjustable Tables

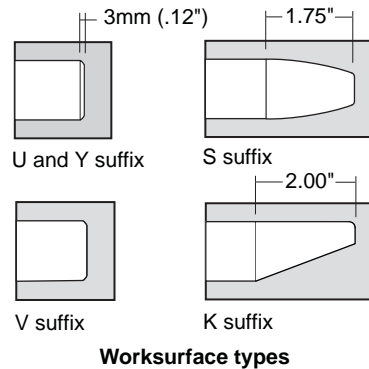
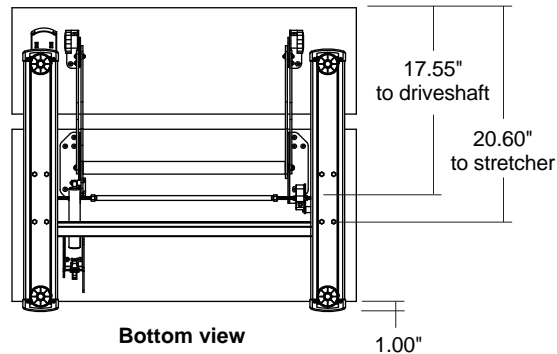
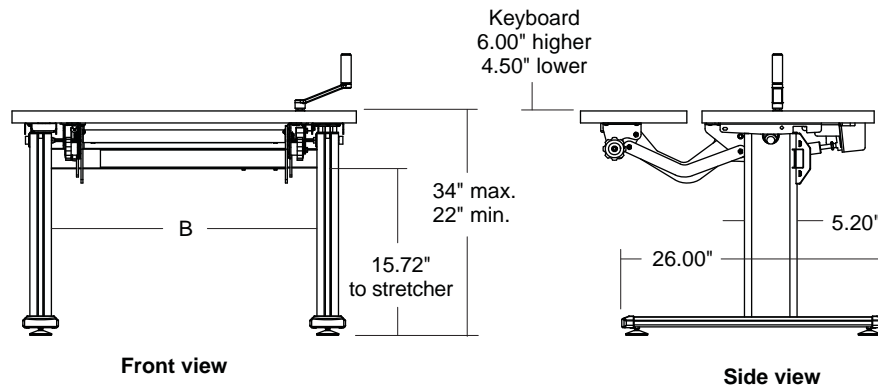
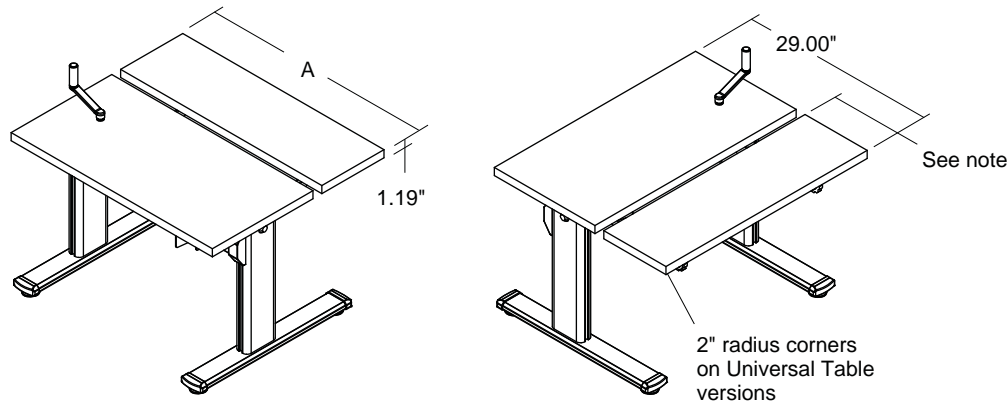
Dimensioned Line Drawings Rectangular Bi-Level Tables

Style No.	Dim. A	Dim. B
A3RD342929	34.00"	26.22"
A3RD402929	40.00"	32.22"
A3RD462929	46.00"	38.22"

Note: Add the following suffixes to specify worksurface type:

- "U" for Universal Table
- "Y" for Universal Systems
- "K" for Knife Edge
- "S" for Urethane Profile
- "V" for Wood Veneer Profile

Note: Keyboard is 10.50" deep except knife and urethane edge models, which are 10.00" deep.



◀ features



◀ construction

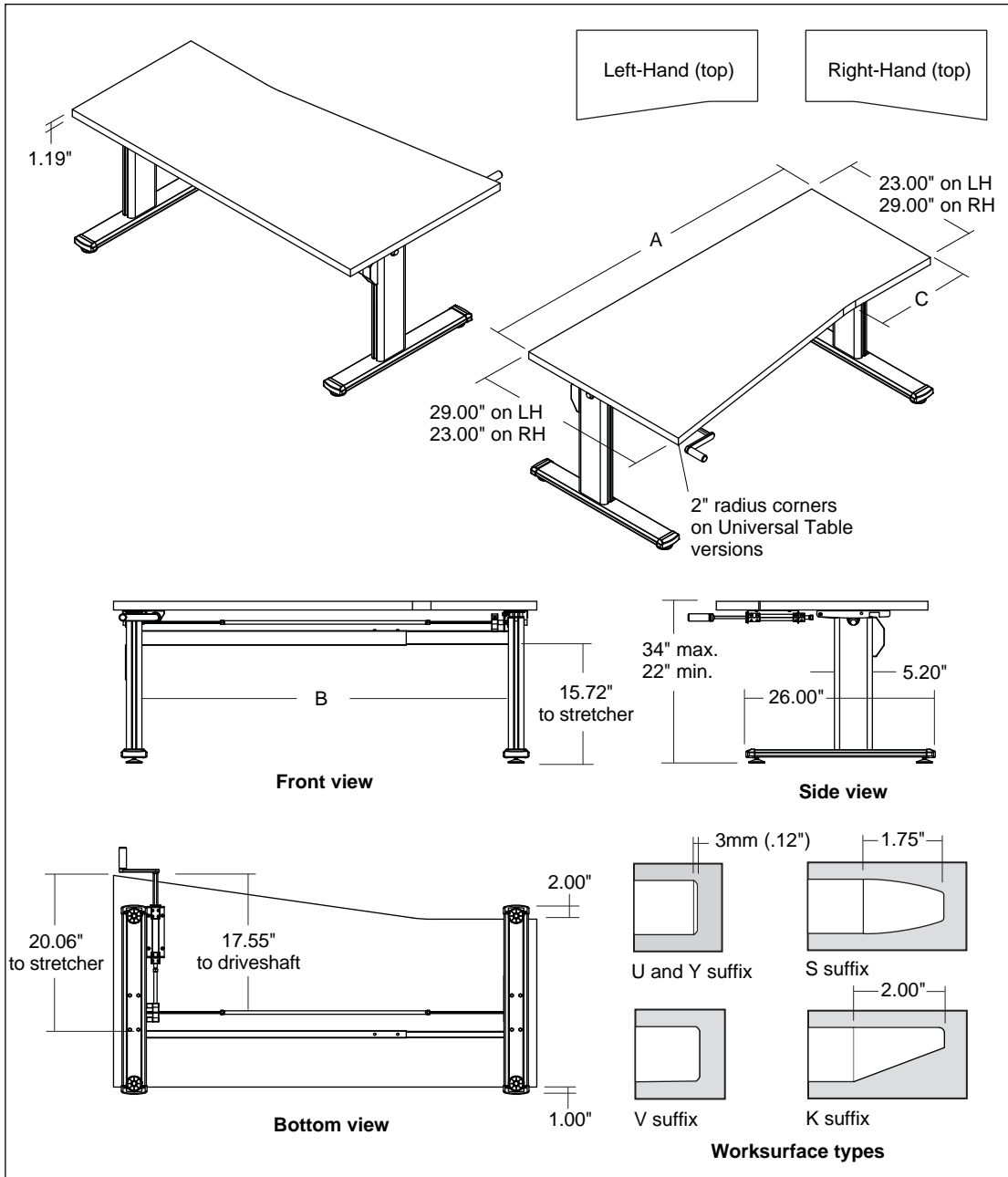


◀ materials



◀ print this page

Series 3 Adjustable Tables



Dimensioned Line Drawings Taper Flat Tables

Style No. Dim. A Dim. B Dim. C

Left-Hand (shown)

A3RT582923	58.00"	54.21"	14.50"
A3RT642923	64.00"	56.22"	16.00"
A3RT702923	70.00"	62.22"	17.50"
A3RT762923	76.00"	71.25"	19.00"

Right-Hand

A3RT582329	58.00"	54.21"	14.50"
A3RT642329	64.00"	56.22"	16.00"
A3RT702329	70.00"	62.22"	17.50"
A3RT762329	76.00"	71.25"	19.00"

Note: Add the following suffixes to specify worksurface type:

- "U" for Universal Table
- "Y" for Universal Systems
- "K" for Knife Edge
- "S" for Urethane Profile
- "V" for Wood Veneer Profile



features



construction



materials



print this page

details[®]
A STEELCASE COMPANY

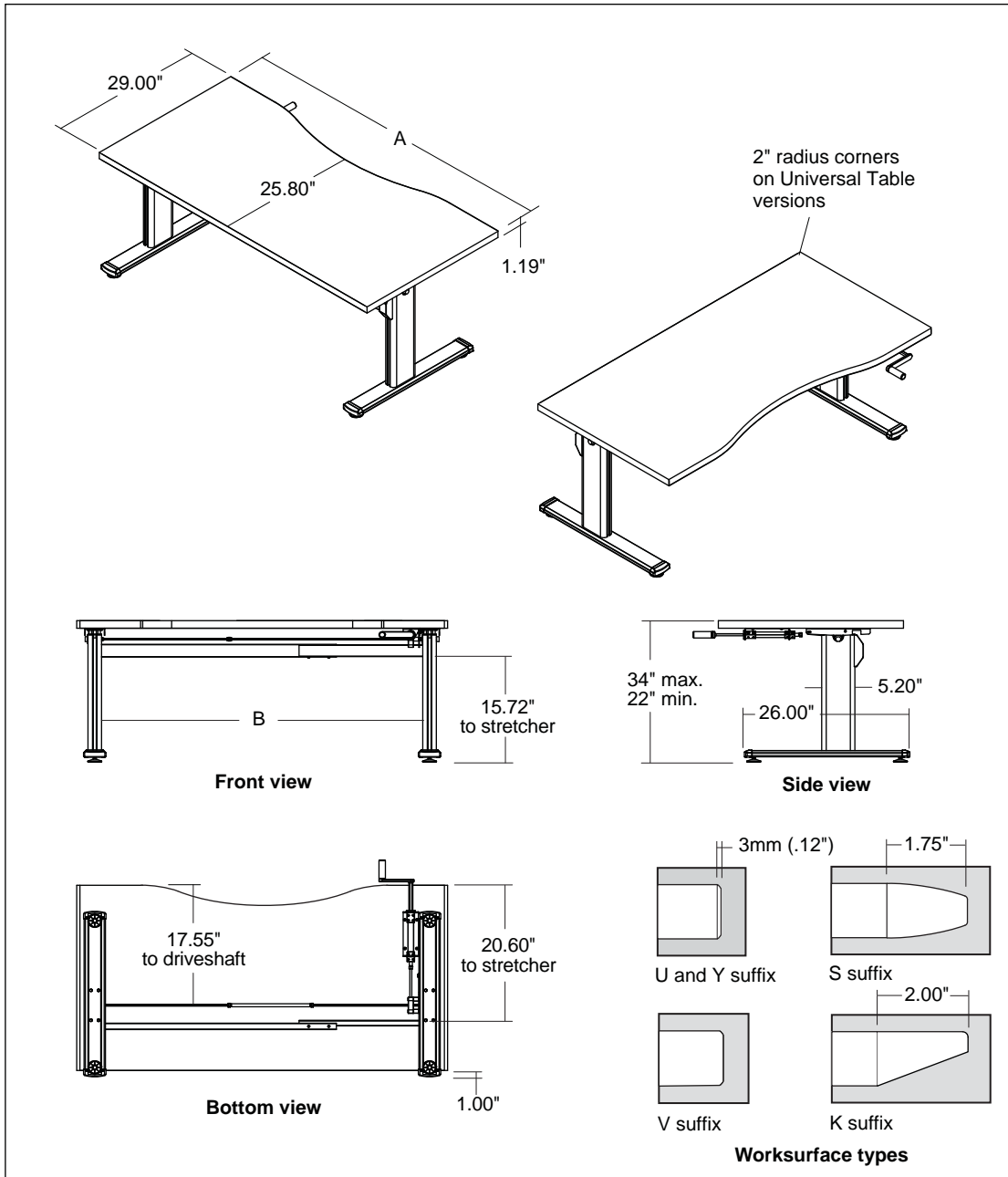
Series 3 Adjustables Tables

Dimensioned Line Drawings Concave Tables

Style No.	Dim. A	Dim. B
A3CQ582929	58.00"	50.22"
A3CQ642929	64.00"	56.22"
A3CQ702929	70.00"	62.22"
A3CQ762929	76.00"	68.22"

Note: Add the following suffixes to specify worksurface type:

- "U" for Universal Table
- "Y" for Universal Systems
- "K" for Knife Edge
- "S" for Urethane Profile
- "V" for Wood Veneer Profile



features



construction



materials



print this page

Series 3 Adjustable Tables

Dimensioned Line Drawings Bullet Tables

Style No.	Dim. A	Dim. B	Dim. C	Dim. D	Dim. E	Dim. F	Dim. G
A3BQ462323	23.00"	46.00"	16.00"	17.55"	29.55"	21.00"	9.93"
A3BQ522323	23.00"	52.00"	16.00"	17.55"	35.55"	21.00"	9.93"
A3BQ582323	23.00"	58.00"	16.00"	17.55"	41.55"	21.00"	9.93"
A3BQ642323	23.00"	64.00"	16.00"	17.55"	47.55"	21.00"	9.93"
A3BQ702323	23.00"	70.00"	16.00"	17.55"	50.55"	21.00"	9.93"
A3BQ762323	23.00"	76.00"	16.00"	17.55"	56.55"	21.00"	9.93"
A3BQ462929	29.00"	46.00"	18.15"	20.60"	29.55"	26.00"	12.93"
A3BQ522929	29.00"	52.00"	18.15"	20.60"	35.55"	26.00"	12.93"
A3BQ582929	29.00"	58.00"	18.15"	20.60"	41.55"	26.00"	12.93"
A3BQ642929	29.00"	64.00"	18.15"	20.60"	47.55"	26.00"	12.93"
A3BQ702929	29.00"	70.00"	18.15"	20.60"	50.55"	26.00"	12.93"
A3BQ762929	29.00"	76.00"	18.15"	20.60"	56.55"	26.00"	12.93"

Note: Add the following suffixes to specify worksurface type:

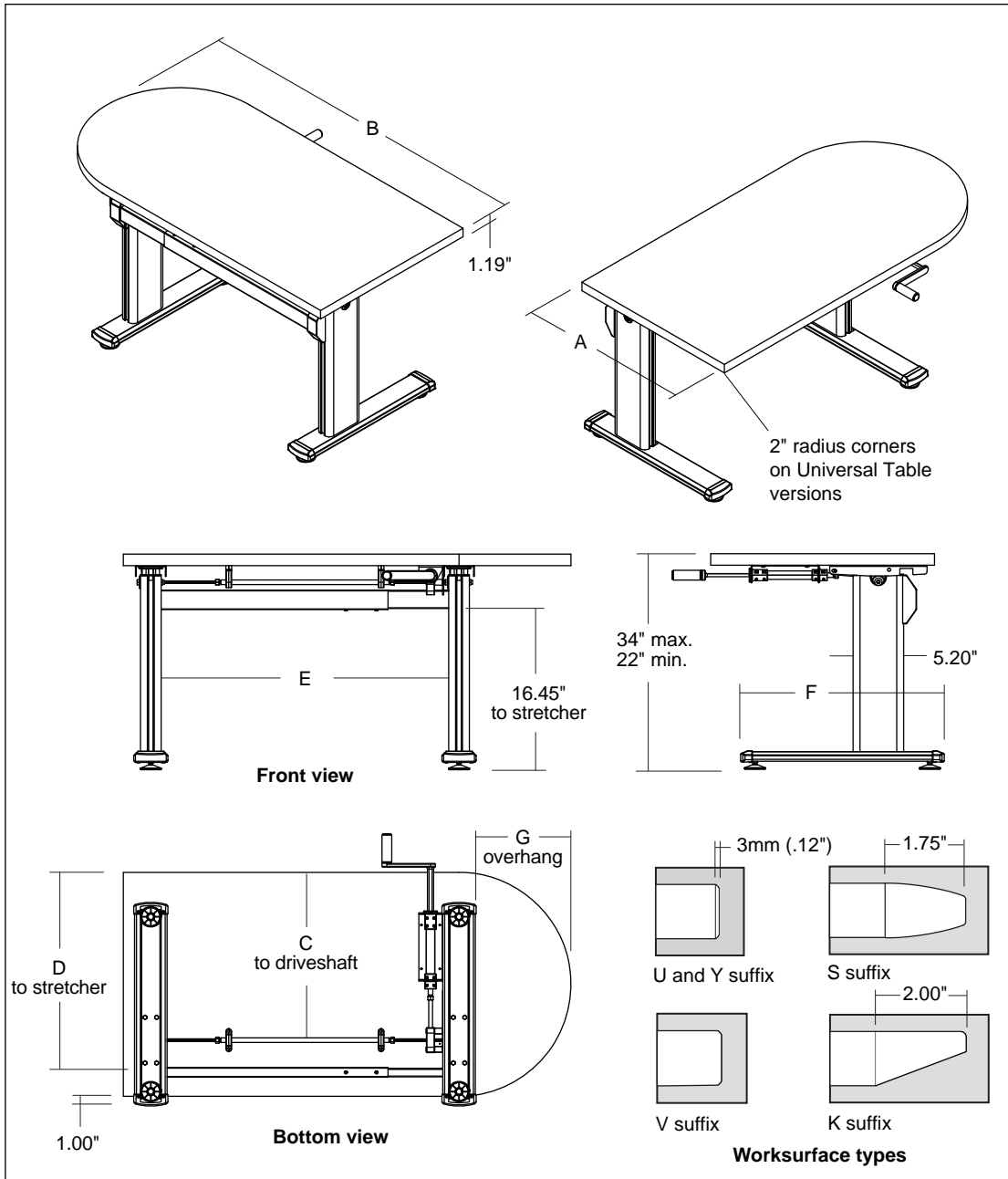
"U" for Universal Table

"Y" for Universal Systems

"K" for Knife Edge

"S" for Urethane Profile

"V" for Wood Veneer Profile



◀ features



◀ construction



◀ materials



◀ print this page

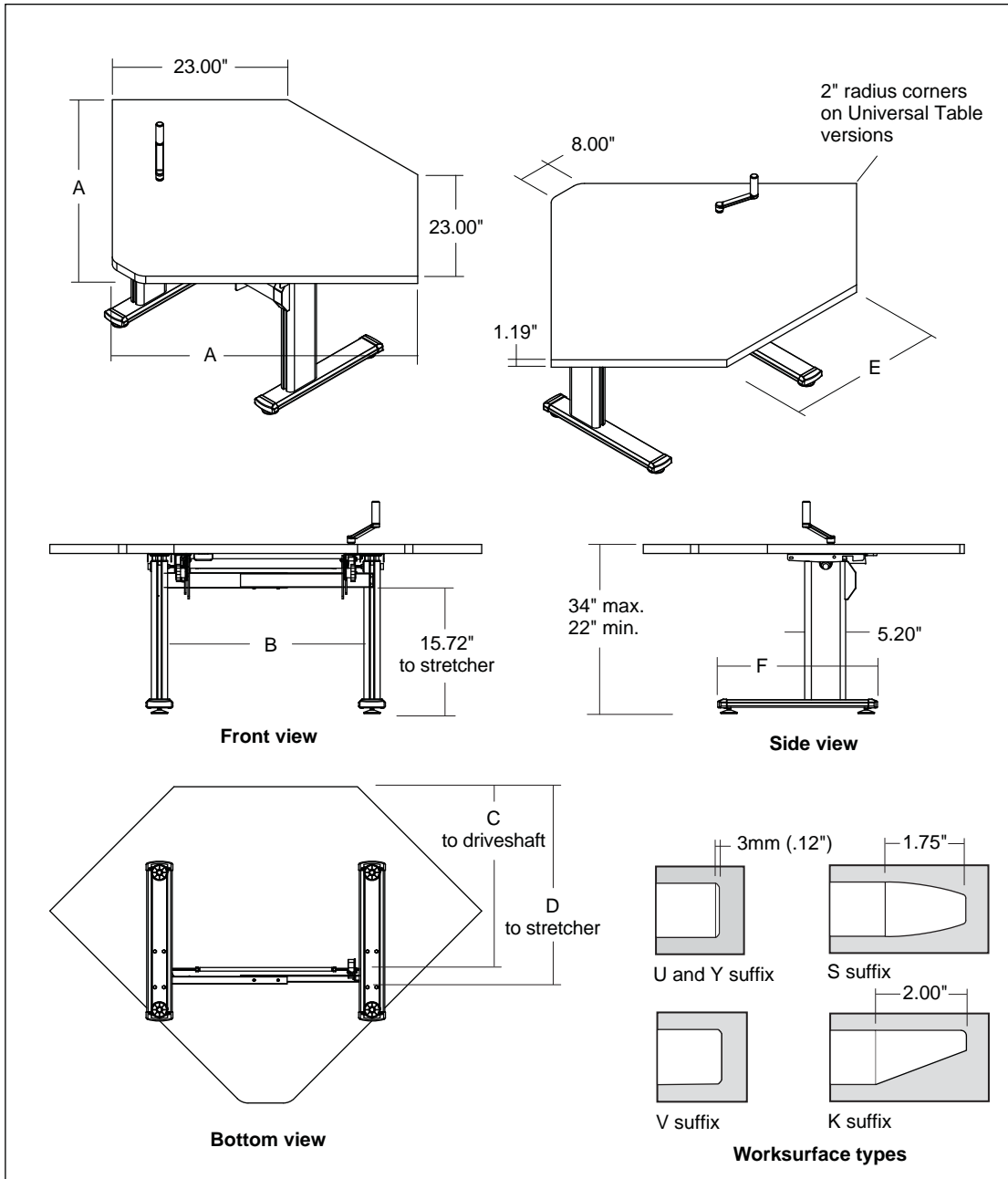
Series 3 Adjustable Tables

Dimensioned Line Drawings 90° Corner Tables

Style No.	Dim. A	Dim. B	Dim. C	Dim. D	Dim. E	Dim. F
A3LQ40234023	40.00"	25.18"	23.90"	26.95"	24.00"	21.00"
A3LQ46234623	46.00"	26.26"	23.16"	26.21"	32.50"	26.00"

Note: Add the following suffixes to specify worksurface type:

- "U" for Universal Table
- "Y" for Universal Systems
- "K" for Knife Edge
- "S" for Urethane Profile
- "V" for Wood Veneer Profile



◀ features



◀ construction



◀ materials



◀ print this page

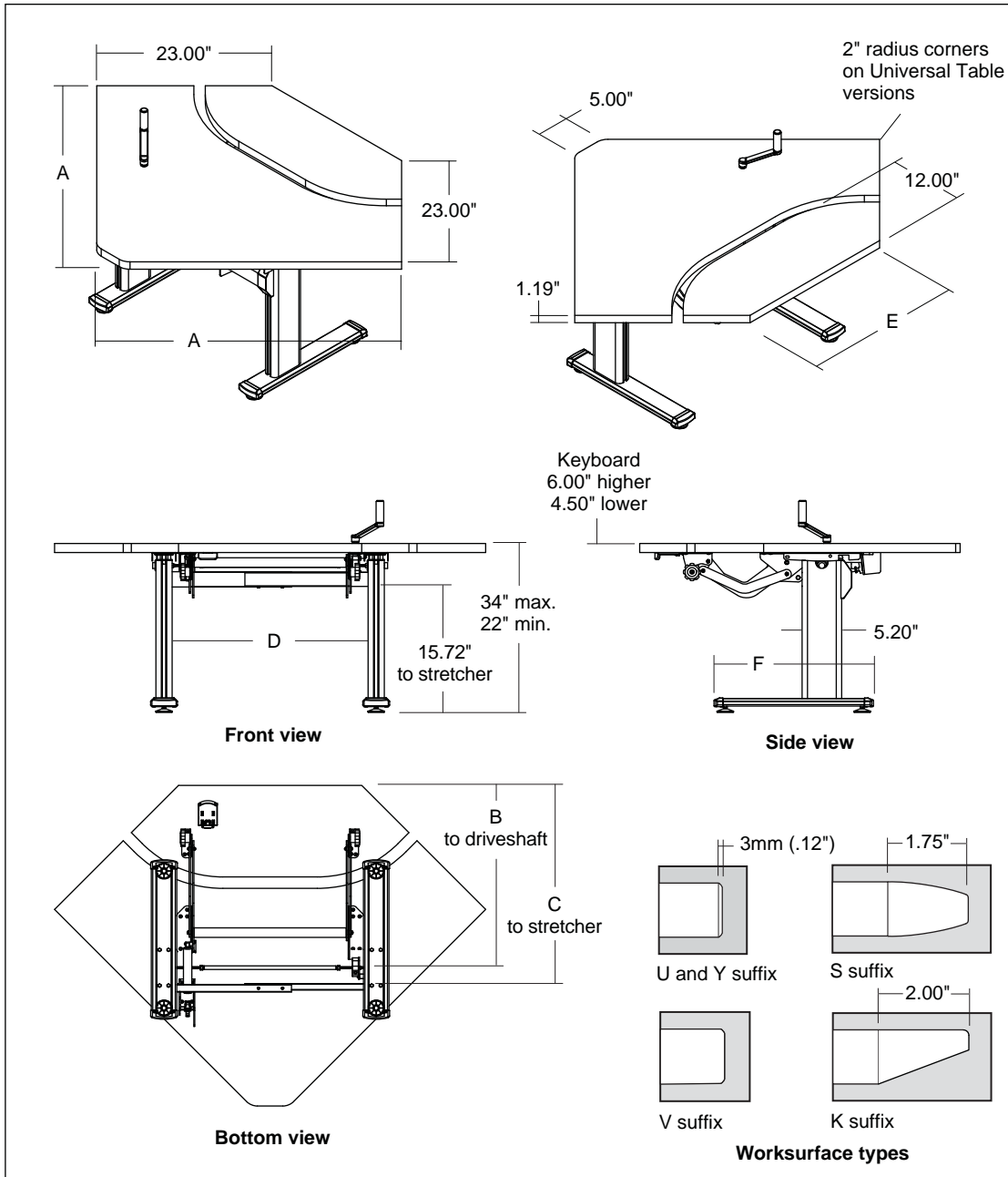
Series 3 Adjustable Tables

Dimensioned Line Drawings 90° Corner Bi-Level Tables

Style No.	Dim. A	Dim. B	Dim. C	Dim. D	Dim. E	Dim. F
A3LD40234023	40.00"	23.67"	26.72"	25.64"	24.00"	21.00"
A3LD46234623	46.00"	23.16"	26.21"	26.26"	32.50"	26.00"

Note: Add the following suffixes to specify worksurface type:

- "U" for Universal Table
- "Y" for Universal Systems
- "K" for Knife Edge
- "S" for Urethane Profile
- "V" for Wood Veneer Profile



◀ features



◀ construction



◀ materials



◀ print this page

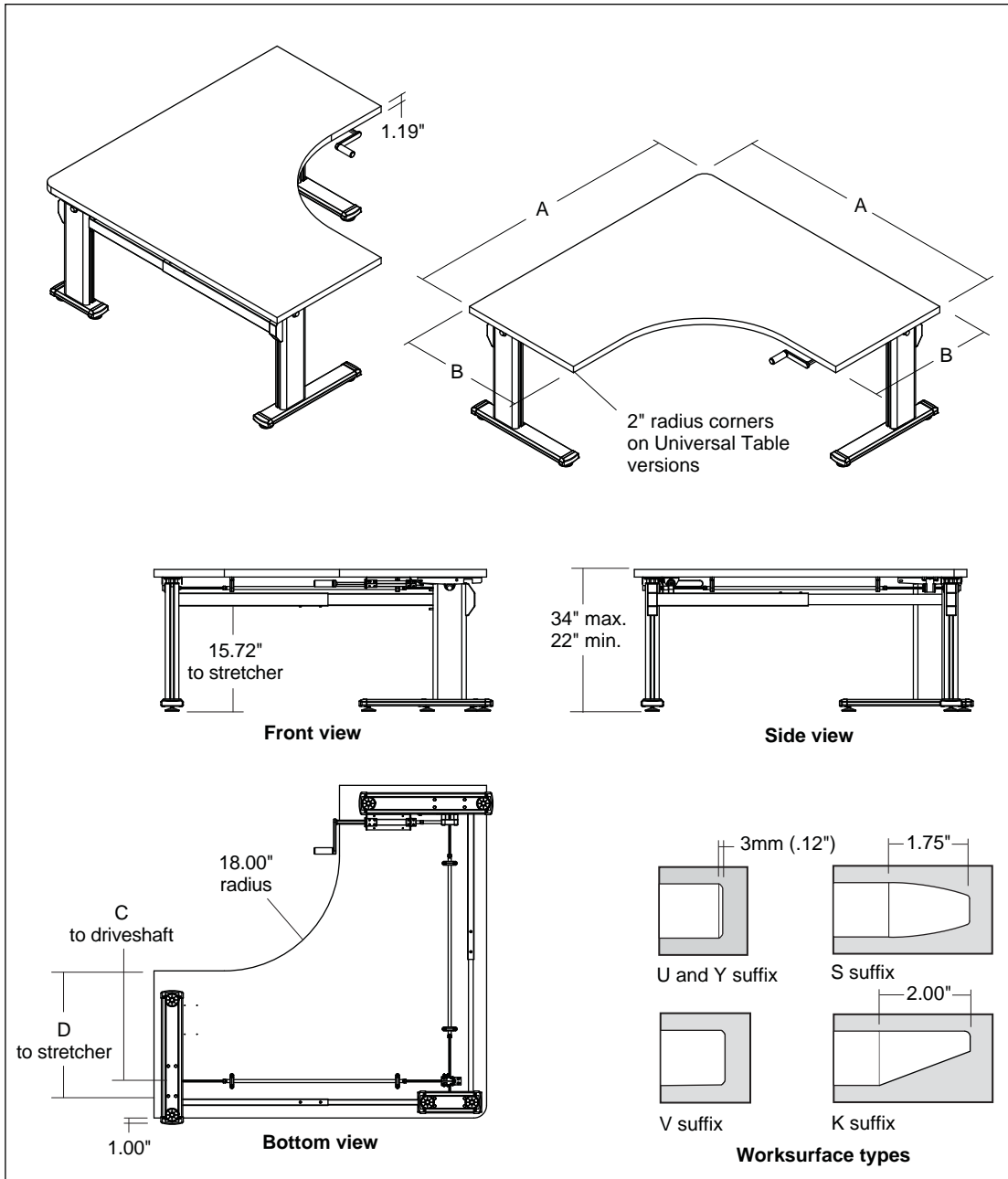
Series 3 Adjustables Tables

Dimensioned Line Drawings 90° Equal Corner Tables

Style No.	Dim. A	Dim. B	Dim. C	Dim. D
A3LQ52235223	52.00"	23.00"	16.00"	18.15"
A3LQ58235823	58.00"	23.00"	16.00"	18.15"
A3LQ64236423	64.00"	23.00"	16.00"	18.15"
A3LQ70237023	70.00"	23.00"	16.00"	18.15"
A3LQ76237623	76.00"	23.00"	16.00"	18.15"
A3LQ52295229	52.00"	29.00"	17.55"	20.60"
A3LQ58295829	58.00"	29.00"	17.55"	20.60"
A3LQ64296429	64.00"	29.00"	17.55"	20.60"

Note: Add the following suffixes to specify worksurface type:

- "U" for Universal Table
- "Y" for Universal Systems
- "K" for Knife Edge
- "S" for Urethane Profile
- "V" for Wood Veneer Profile



features



construction



materials

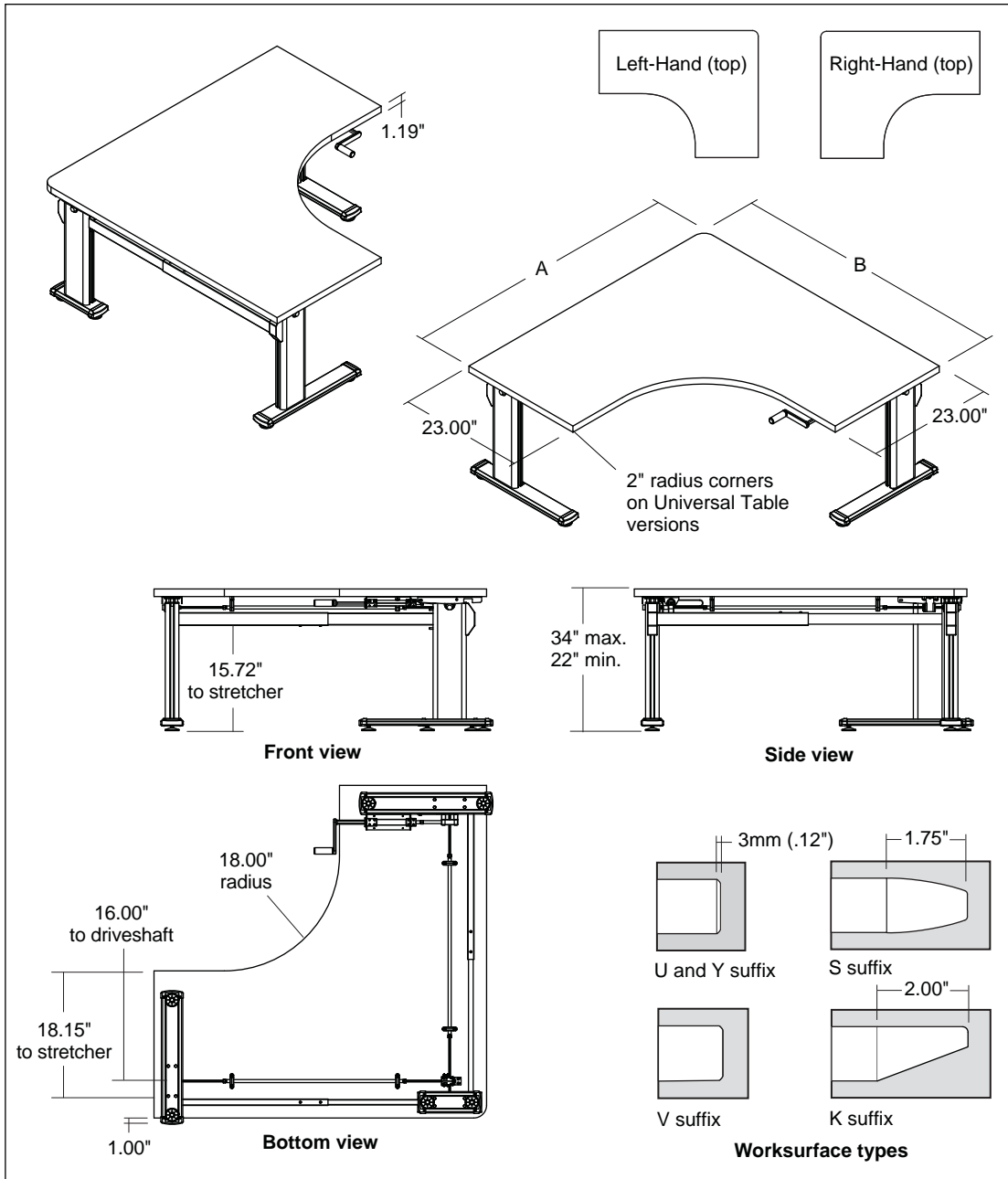


print this page

details[®]
A STEELCASE COMPANY

Series 3 Adjustable Tables

Dimensioned Line Drawings 90° Extended Corner Tables - 23"D



Style No.	Dim. A	Dim. B
Left-Hand		
A3LE58234023	58.00"	40.00"
A3LE58234623	58.00"	46.00"
A3LE64234023	64.00"	40.00"
A3LE64234623	64.00"	46.00"
A3LE64235823	64.00"	58.00"
A3LE70234023	70.00"	40.00"
A3LE70234623	70.00"	46.00"
A3LE70235823	70.00"	58.00"
A3LE76234023	76.00"	40.00"
A3LE76234623	76.00"	46.00"
A3LE76235823	76.00"	58.00"
Right-Hand		
A3LE40235823	40.00"	58.00"
A3LE40236423	40.00"	64.00"
A3LE40237023	40.00"	70.00"
A3LE40237623	40.00"	76.00"
A3LE46235823	46.00"	58.00"
A3LE46236423	46.00"	64.00"
A3LE46237023	46.00"	70.00"
A3LE46237623	46.00"	76.00"
A3LE58236423	58.00"	64.00"
A3LE58237023	58.00"	70.00"
A3LE58237623	58.00"	76.00"

Left-Hand

A3LE58234023	58.00"	40.00"
A3LE58234623	58.00"	46.00"
A3LE64234023	64.00"	40.00"
A3LE64234623	64.00"	46.00"
A3LE64235823	64.00"	58.00"
A3LE70234023	70.00"	40.00"
A3LE70234623	70.00"	46.00"
A3LE70235823	70.00"	58.00"
A3LE76234023	76.00"	40.00"
A3LE76234623	76.00"	46.00"
A3LE76235823	76.00"	58.00"

Right-Hand

A3LE40235823	40.00"	58.00"
A3LE40236423	40.00"	64.00"
A3LE40237023	40.00"	70.00"
A3LE40237623	40.00"	76.00"
A3LE46235823	46.00"	58.00"
A3LE46236423	46.00"	64.00"
A3LE46237023	46.00"	70.00"
A3LE46237623	46.00"	76.00"
A3LE58236423	58.00"	64.00"
A3LE58237023	58.00"	70.00"
A3LE58237623	58.00"	76.00"

Note: Add the following suffixes to specify worksurface type:

- "U" for Universal Table
- "Y" for Universal Systems
- "K" for Knife Edge
- "S" for Urethane Profile
- "V" for Wood Veneer Profile



features



construction



materials



print this page

details[®]
A STEELCASE COMPANY

Series 3 Adjustables Tables

Dimensioned Line Drawings 90° Extended Corner Tables - 29"D

Style No. Dim. A Dim. B

Left-Hand

A3LE64295829 64.00" 58.00"

A3LE70295829 70.00" 58.00"

A3LE76295829 76.00" 58.00"

Right-Hand

A3LE58296429 58.00" 64.00"

A3LE58297029 58.00" 70.00"

A3LE58297629 58.00" 76.00"

Note: Add the following suffixes to specify worksurface type:

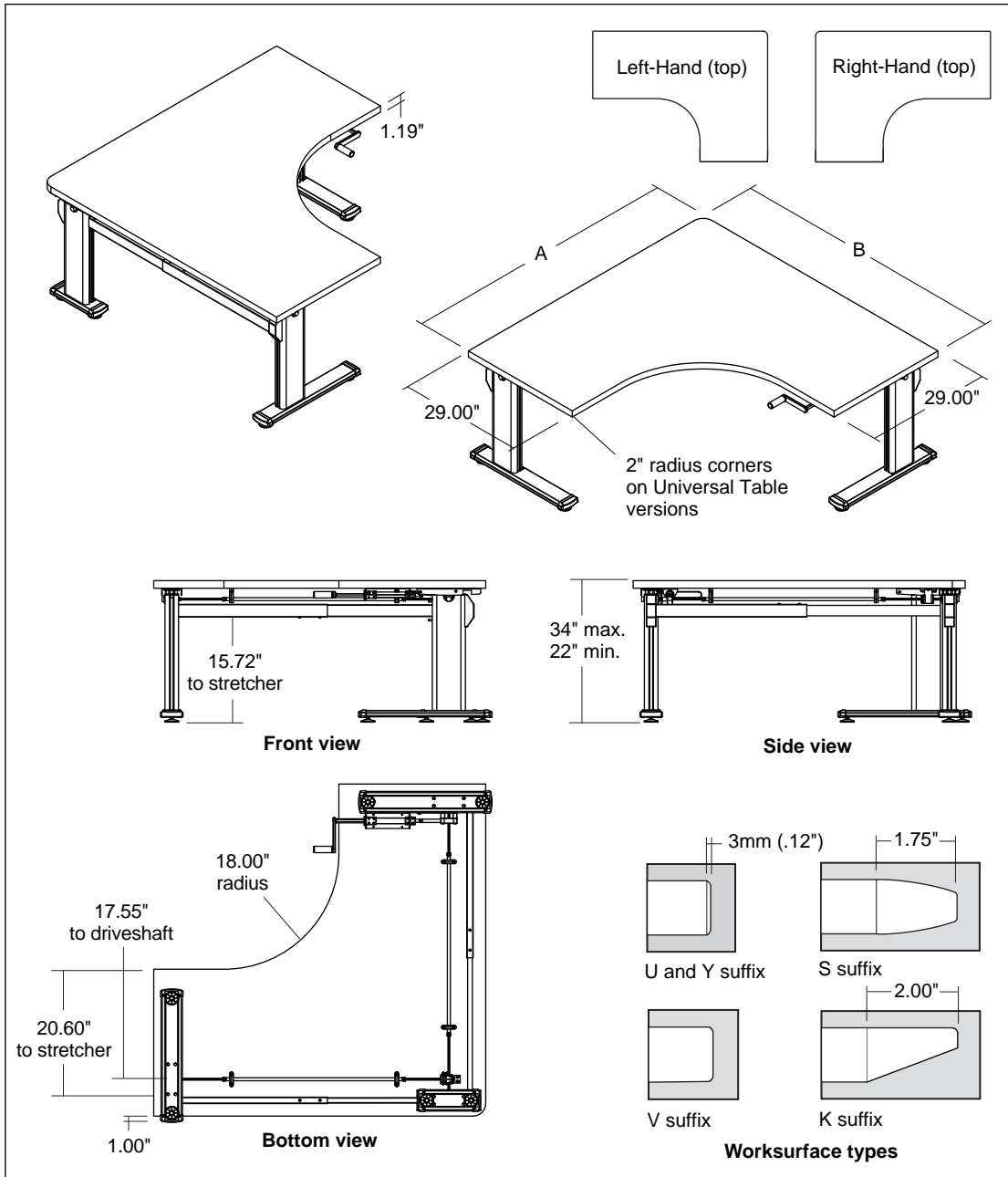
"U" for Universal Table

"Y" for Universal Systems

"K" for Knife Edge

"S" for Urethane Profile

"V" for Wood Veneer Profile



◀ features



◀ construction



◀ materials



◀ print this page

Series 3 Adjustable Tables

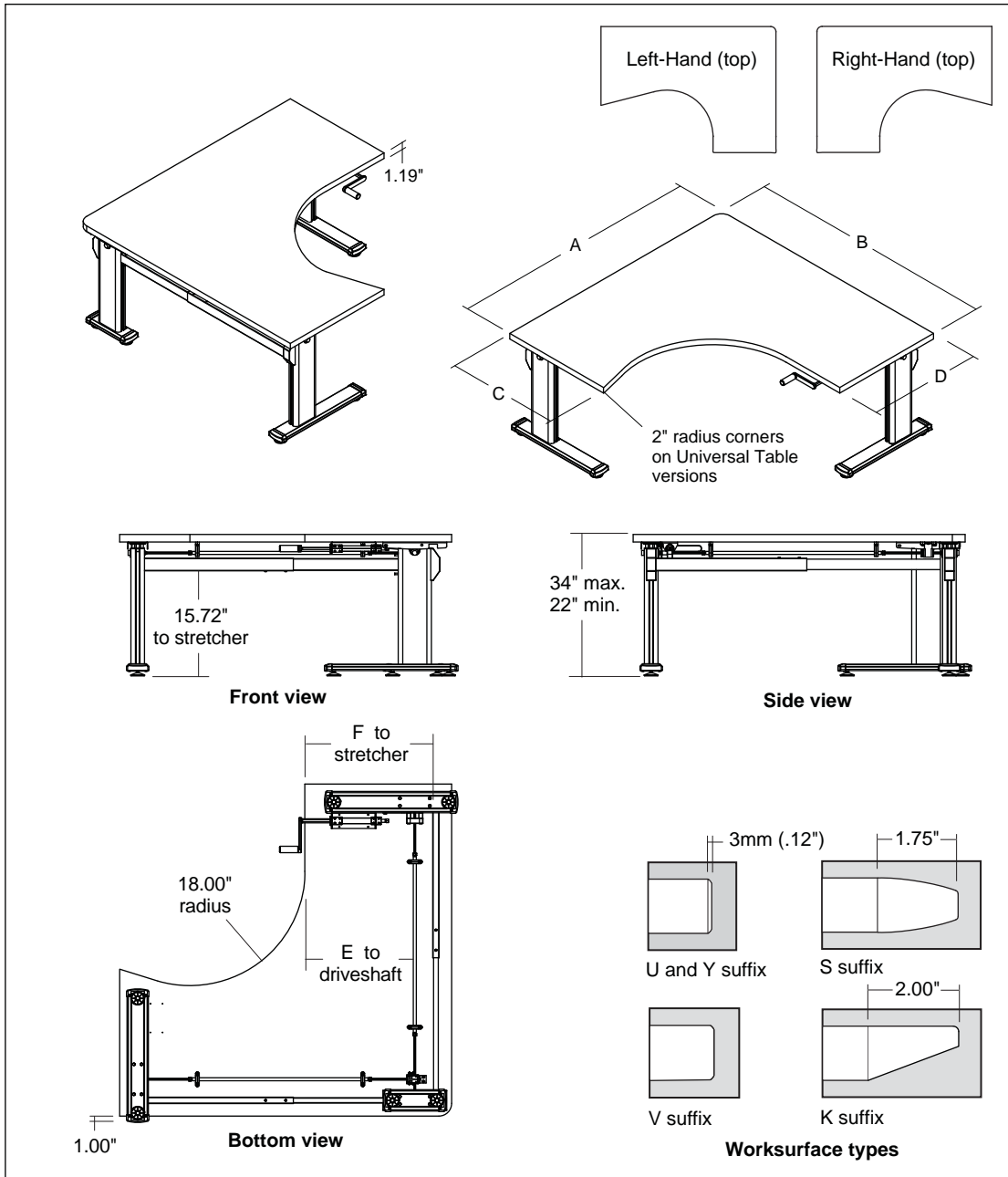
Dimensioned Line Drawings 90° Boot Tables

Style No.	Dim. A	Dim. B	Dim. C	Dim. D	Dim. E	Dim. F
Left-Hand						
A3LE64295823	64.00"	58.00"	29.00"	23.00"	16.00"	17.55"
A3LE70294023	70.00"	40.00"	29.00"	23.00"	16.00"	17.55"
A3LE70294623	70.00"	46.00"	29.00"	23.00"	16.00"	17.55"
A3LE70295823	70.00"	58.00"	29.00"	23.00"	16.00"	17.55"
A3LE76294023	76.00"	40.00"	29.00"	23.00"	16.00"	17.55"
A3LE76294623	76.00"	46.00"	29.00"	23.00"	16.00"	17.55"
A3LE76295823	76.00"	58.00"	29.00"	23.00"	16.00"	17.55"

Right-Hand						
A3LE40237029	40.00"	70.00"	23.00"	29.00"	18.15"	20.60"
A3LE40237629	40.00"	76.00"	23.00"	29.00"	18.15"	20.60"
A3LE46237029	46.00"	70.00"	23.00"	29.00"	18.15"	20.60"
A3LE46237629	46.00"	76.00"	23.00"	29.00"	18.15"	20.60"
A3LE58236429	58.00"	64.00"	23.00"	29.00"	18.15"	20.60"
A3LE58237029	58.00"	70.00"	23.00"	29.00"	18.15"	20.60"
A3LE58237629	58.00"	76.00"	23.00"	29.00"	18.15"	20.60"

Note: Add the following suffixes to specify worksurface type:

- "U" for Universal Table
- "Y" for Universal Systems
- "K" for Knife Edge
- "S" for Urethane Profile
- "V" for Wood Veneer Profile



features



construction



materials

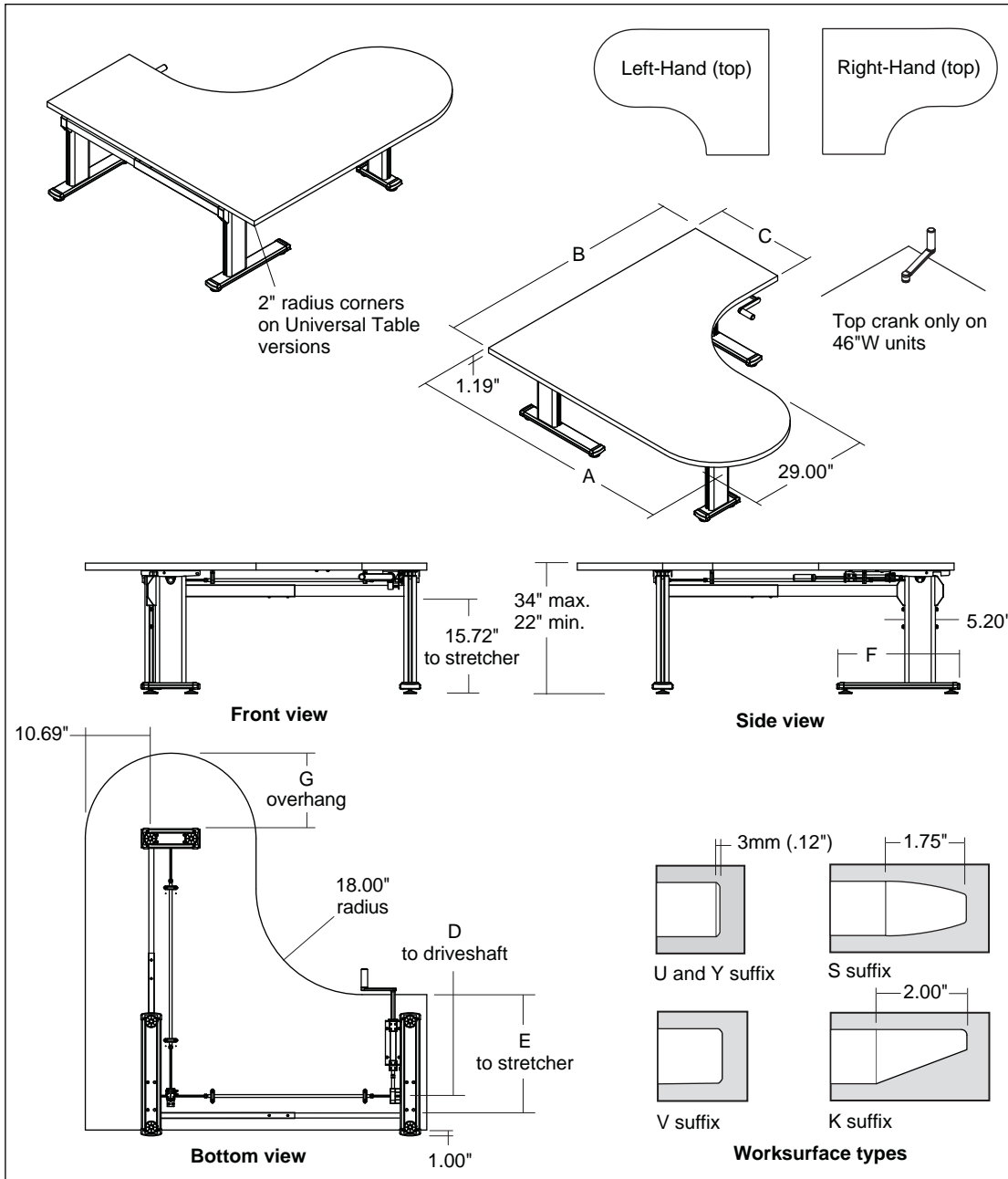


print this page

details[®]
A STEELCASE COMPANY

Series 3 Adjustable Tables

Dimensioned Line Drawings P-Tables



Style No.	Dim. A	Dim. B	Dim. C	Dim. D	Dim. E	Dim. F	Dim. G
-----------	--------	--------	--------	--------	--------	--------	--------

Left-Hand

A3PE64295823	64.00"	58.00"	23.00"	16.00"	18.55"	21.00"	9.93"
A3PE70294623	70.00"	46.00"	23.00"	16.00"	18.55"	21.00"	9.93"
A3PE70295823	70.00"	58.00"	23.00"	16.00"	18.55"	21.00"	9.93"
A3PE76294623	76.00"	46.00"	23.00"	16.00"	18.55"	21.00"	9.93"
A3PE76295823	76.00"	58.00"	23.00"	16.00"	18.55"	21.00"	9.93"

A3PE64295829	64.00"	58.00"	29.00"	17.55"	20.60"	26.00"	12.93"
A3PE70295829	70.00"	58.00"	29.00"	17.55"	20.60"	26.00"	12.93"
A3PE76295829	76.00"	58.00"	29.00"	17.55"	20.60"	26.00"	12.93"

Right-Hand

A3PE46237029	46.00"	70.00"	23.00"	16.00"	18.55"	21.00"	9.93"
A3PE46237629	46.00"	76.00"	23.00"	16.00"	18.55"	21.00"	9.93"
A3PE58236429	58.00"	64.00"	23.00"	16.00"	18.55"	21.00"	9.93"
A3PE58237029	58.00"	70.00"	23.00"	16.00"	18.55"	21.00"	9.93"
A3PE58237629	58.00"	76.00"	23.00"	16.00"	18.55"	21.00"	9.93"

A3PE58296429	58.00"	64.00"	29.00"	17.55"	20.60"	26.00"	12.93"
A3PE58297029	58.00"	70.00"	29.00"	17.55"	20.60"	26.00"	12.93"
A3PE58297629	58.00"	76.00"	29.00"	17.55"	20.60"	26.00"	12.93"

Note: Add the following suffixes to specify worksurface type:

- "U" for Universal Table
- "Y" for Universal Systems
- "K" for Knife Edge
- "S" for Urethane Profile
- "V" for Wood Veneer Profile



features



construction



materials



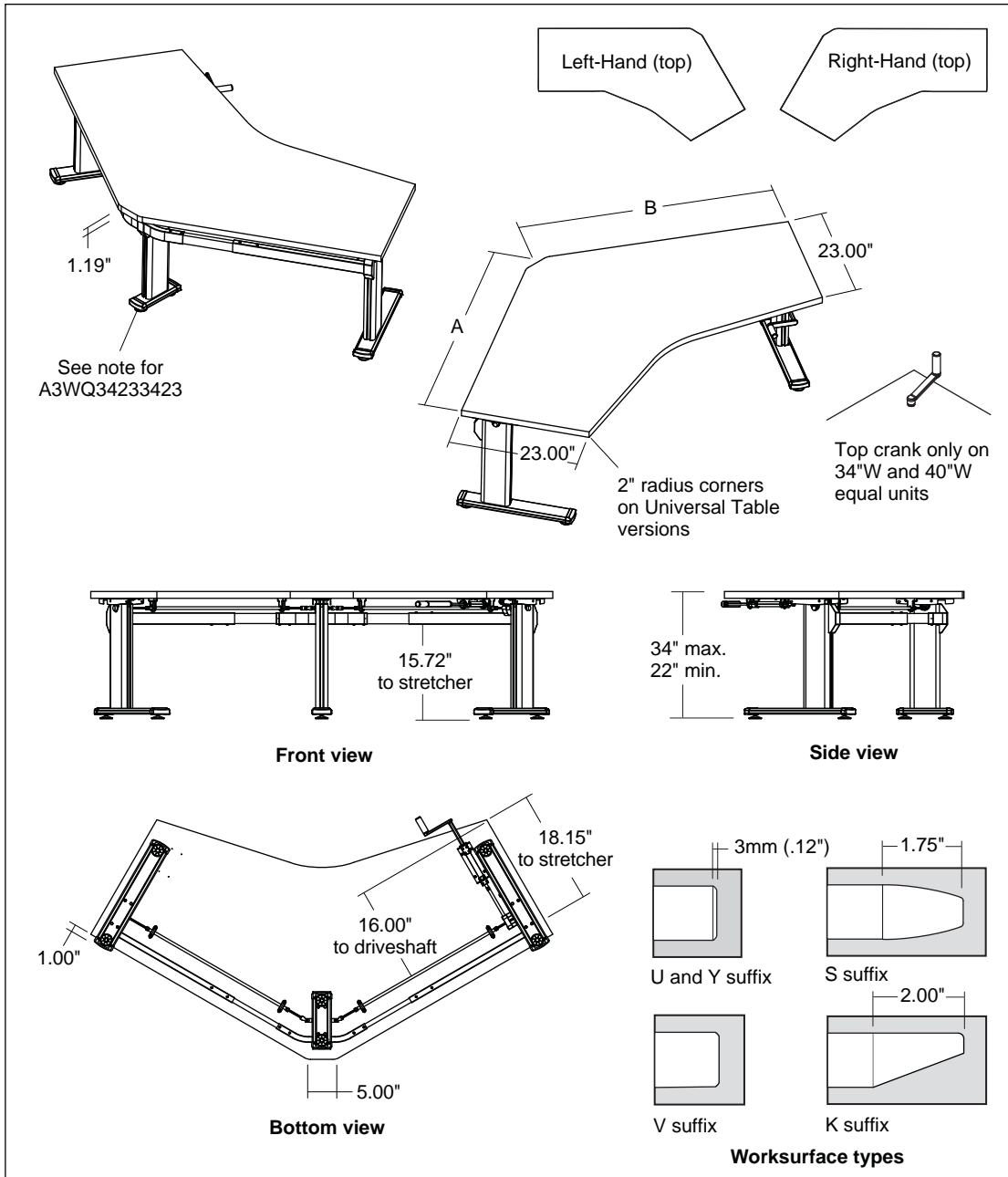
print this page

details®

A STEELCASE COMPANY

Series 3 Adjustable Tables

Dimensioned Line Drawings 120° Tables



Style No. Dim. A Dim. B

Equal

A3WQ34233423	34.42"	34.42"	Note: This model has 2-leg base
A3WQ40234023	40.42"	40.42"	
A3WQ46234623	46.42"	46.42"	
A3WQ52235223	52.42"	52.42"	
A3WQ58235823	58.42"	58.42"	
A3WQ64236423	64.42"	64.42"	

Extended Left-Hand

A3WE58233423	58.42"	34.42"
A3WE58234023	58.42"	40.42"
A3WE58234623	58.42"	46.42"
A3WE64233423	64.42"	34.42"
A3WE64234023	64.42"	40.42"
A3WE64234623	64.42"	46.42"
A3WE64235823	64.42"	58.42"

Extended Right-Hand

A3WE34235823	34.42"	58.42"
A3WE34236423	34.42"	64.42"
A3WE40235823	40.42"	58.42"
A3WE40236423	40.42"	64.42"
A3WE46235823	46.42"	58.42"
A3WE46236423	46.42"	64.42"
A3WE58236423	58.42"	64.42"

Note: Add the following suffixes to specify worksurface type:

- "U" for Universal Table
- "Y" for Universal Systems
- "K" for Knife Edge
- "S" for Urethane Profile
- "V" for Wood Veneer Profile



features



construction



materials



print this page

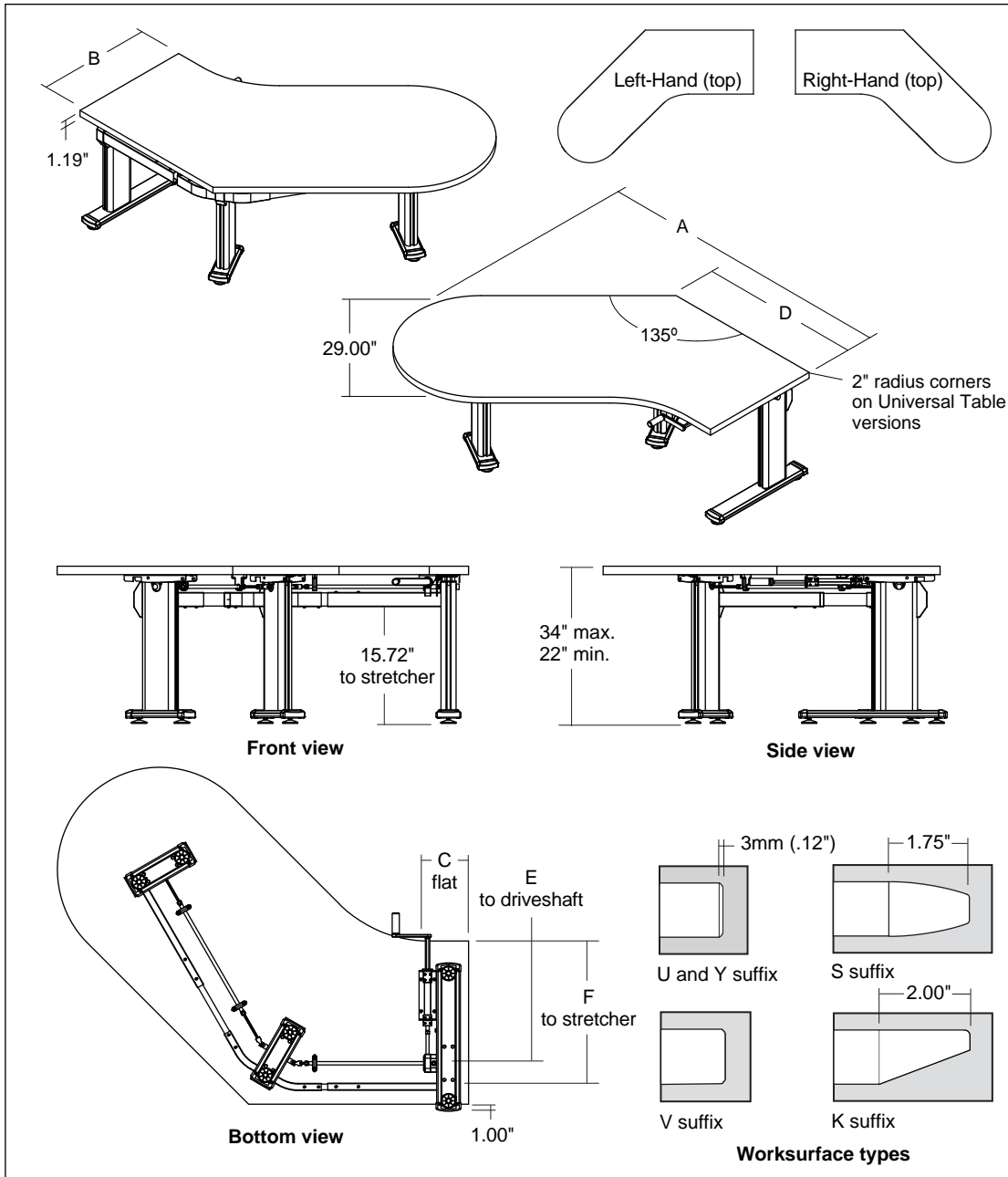
Series 3 Adjustable Tables

Dimensioned Line Drawings Bubble Jetty Tables

Style No.	Dim. A	Dim. B	Dim. C	Dim. D	Dim. E	Dim. F
Left-Hand						
A3JL642923	64.00"	23.00"	11.50"	37.00"	16.00"	18.15"
A3JL702923	70.00"	23.00"	17.50"	43.00"	16.00"	18.15"
A3JL762923	76.00"	23.00"	23.50"	49.00"	16.00"	18.15"
A3JL642929	64.00"	29.00"	17.50"	37.00"	17.55"	20.60"
A3JL702929	70.00"	29.00"	23.50"	43.00"	17.55"	20.60"
A3JL762929	76.00"	29.00"	29.50"	49.00"	17.55"	20.60"
Right-Hand						
A3JR642329	64.00"	23.00"	11.50"	37.00"	16.00"	18.15"
A3JR702329	70.00"	23.00"	17.50"	43.00"	16.00"	18.15"
A3JR762329	76.00"	23.00"	23.50"	49.00"	16.00"	18.15"
A3JR642929	64.00"	29.00"	17.50"	37.00"	17.55"	20.60"
A3JR702929	70.00"	29.00"	23.50"	43.00"	17.55"	20.60"
A3JR762929	76.00"	29.00"	29.50"	49.00"	17.55"	20.60"

Note: Add the following suffixes to specify worksurface type:

- "U" for Universal Table
- "Y" for Universal Systems
- "K" for Knife Edge
- "S" for Urethane Profile
- "V" for Wood Veneer Profile



features



construction



materials



print this page