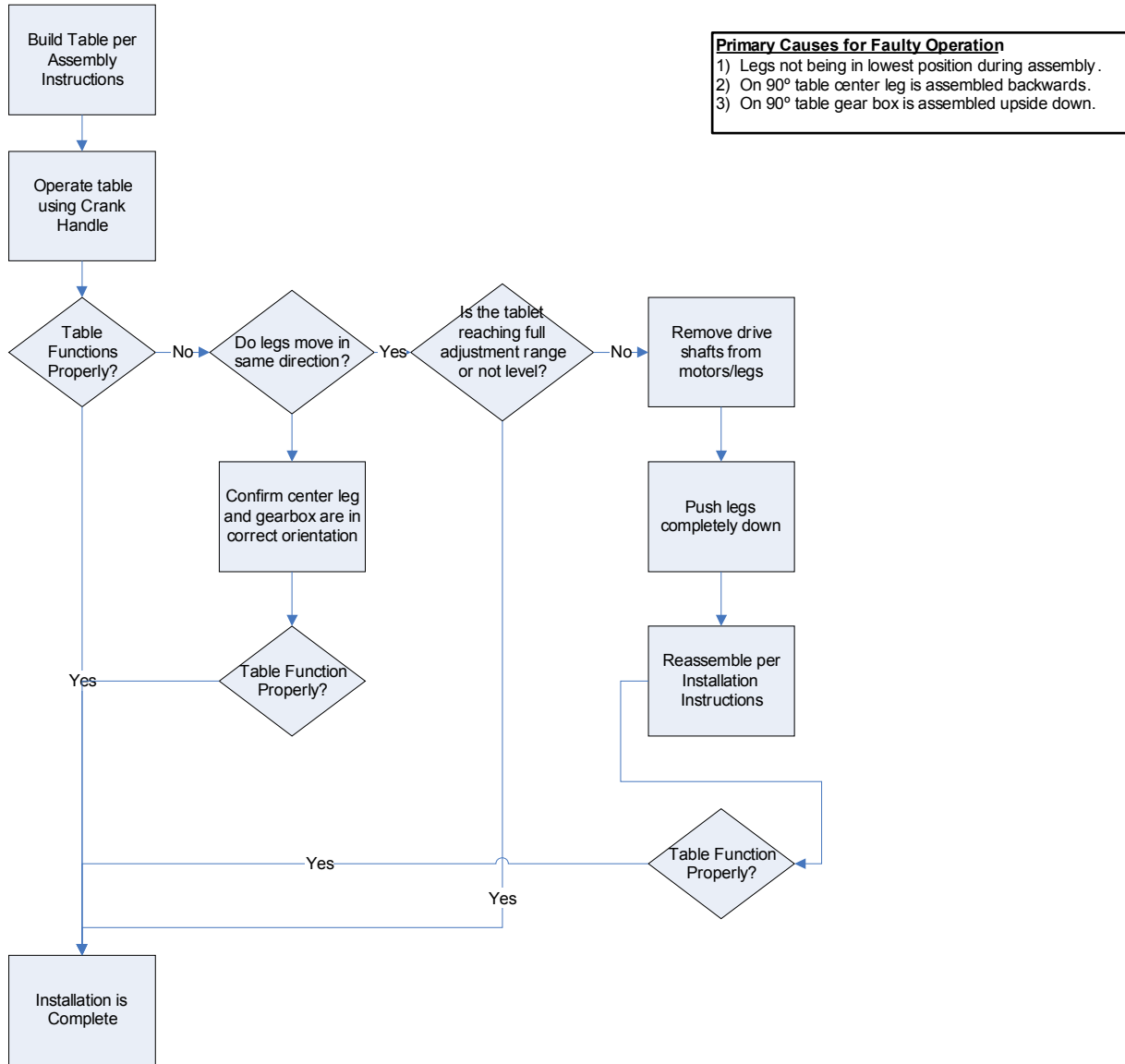


AdjusTables Series 3 Troubleshooting Guide

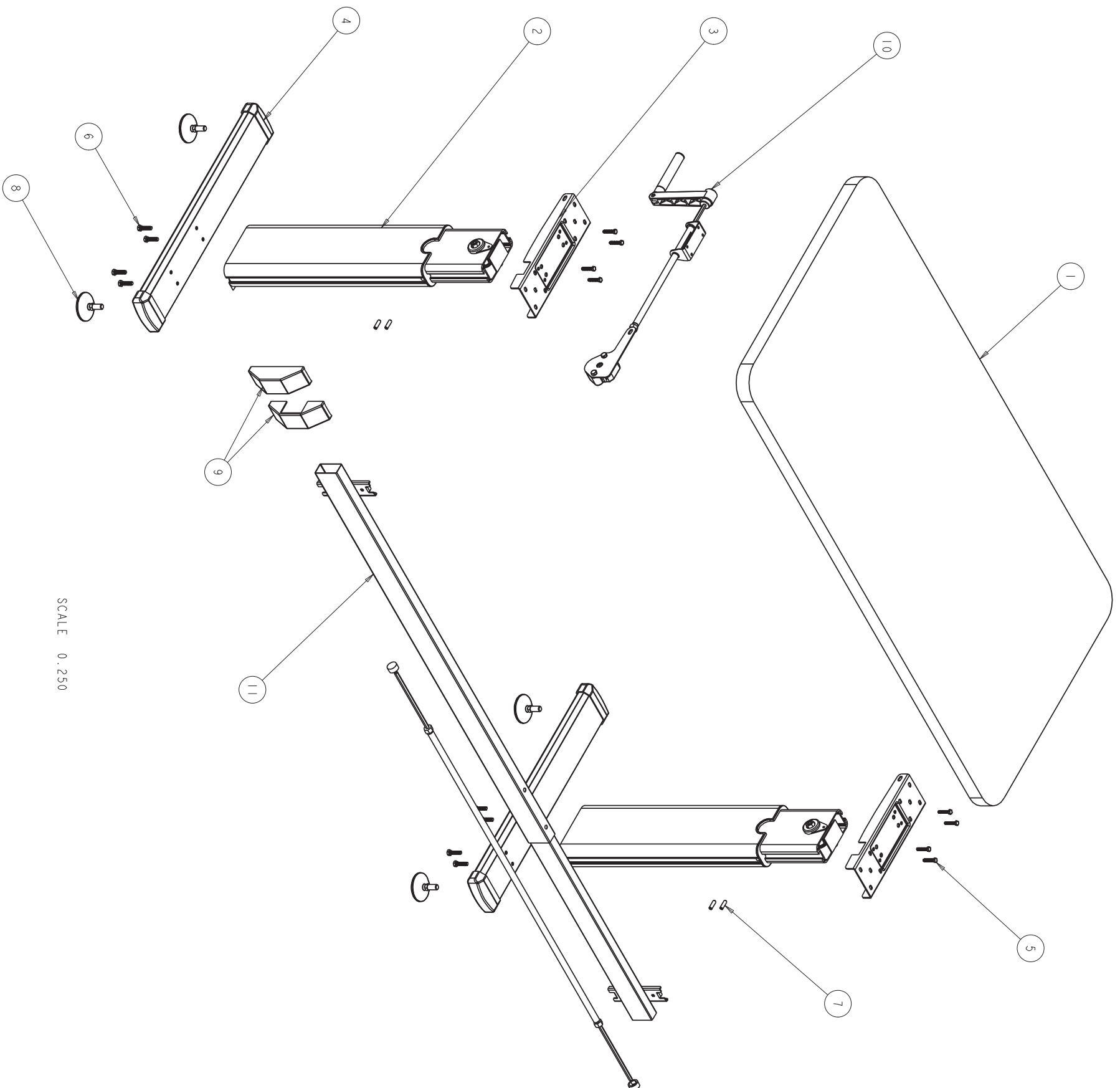
Issues with Table or Primary Cause of Faulty Operation	Suggested Fixes
Unbalanced legs	<ol style="list-style-type: none"> 1) First check to be certain that the glides are adjusted properly. 2) If still unbalanced, <ul style="list-style-type: none"> • Remove drive shaft from legs • Push the legs into the completely retracted position (all the way down). • Re-assemble; plug in and try again.
Legs do not move in same direction on a 90 degree table (2 legs up while one moves down or vice versa)	<ol style="list-style-type: none"> 1) Center leg may be rotated incorrectly. Refer to installation instructions for correct orientation. 2) Center (90 degree) gearbox is oriented incorrectly. Refer to installation instructions for correct orientation.
Extension leg on 90 degree table does not move	<ol style="list-style-type: none"> 1) Confirm hex drive shaft is seated into the 90 degree gearbox. 2) Confirm gearbox is functioning properly. Test with different gear box. Replace if necessary.
Bad Leg	<ol style="list-style-type: none"> 1) Test with different leg. Replace if necessary

AdjuTables Series 3 Troubleshooting Guide



S3 - STRAIGHT, 23W

AdjustTables Series 3 Troubleshooting Guide

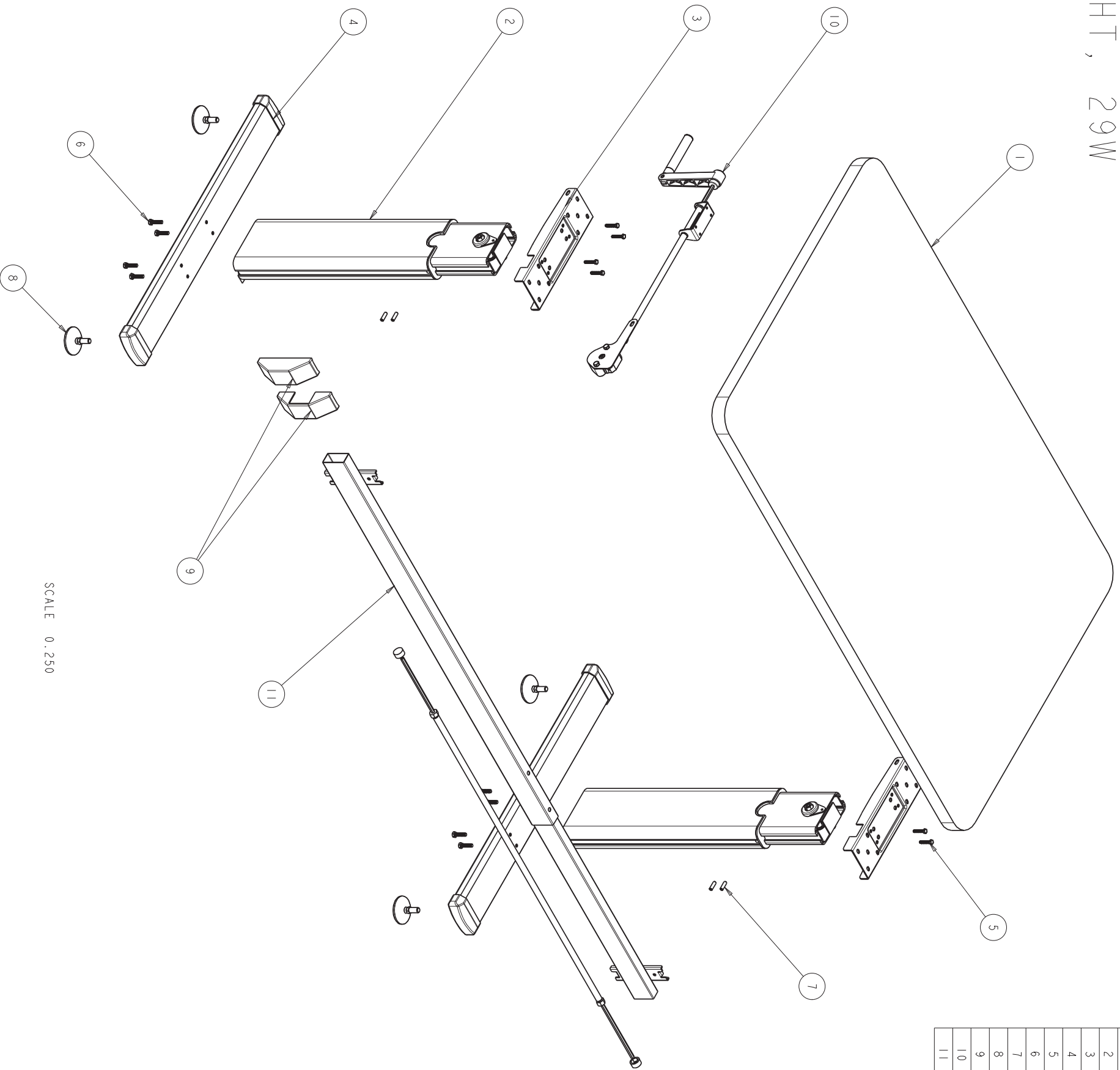


SCALE 0.250

S. NO	Part Number	Description
1	-	S3 - WORKSURFACE 23W
2	005204D	S3 - LEG
3	004234D	AVS - TOP PLATE
4	005370D	S3 - 21IN FOOT ASSEMBLY
5	004238D	AVS - M5 BOLT
6	004239D	AVS - M6 BOLT
7	004293D	AVS - SCREW
8	004237D	GLIDE
9	004250D	STRAIGHT STRETCHER COVER SET
10	005230D	HANDLE PACK-SIZE 1 WITH 4:1
11	004228D	AVS STRAIGHT STRETCHER ASSEMBLY

AdjustTables Series 3 Troubleshooting Guide

S3 - STRAIGHT, 29W

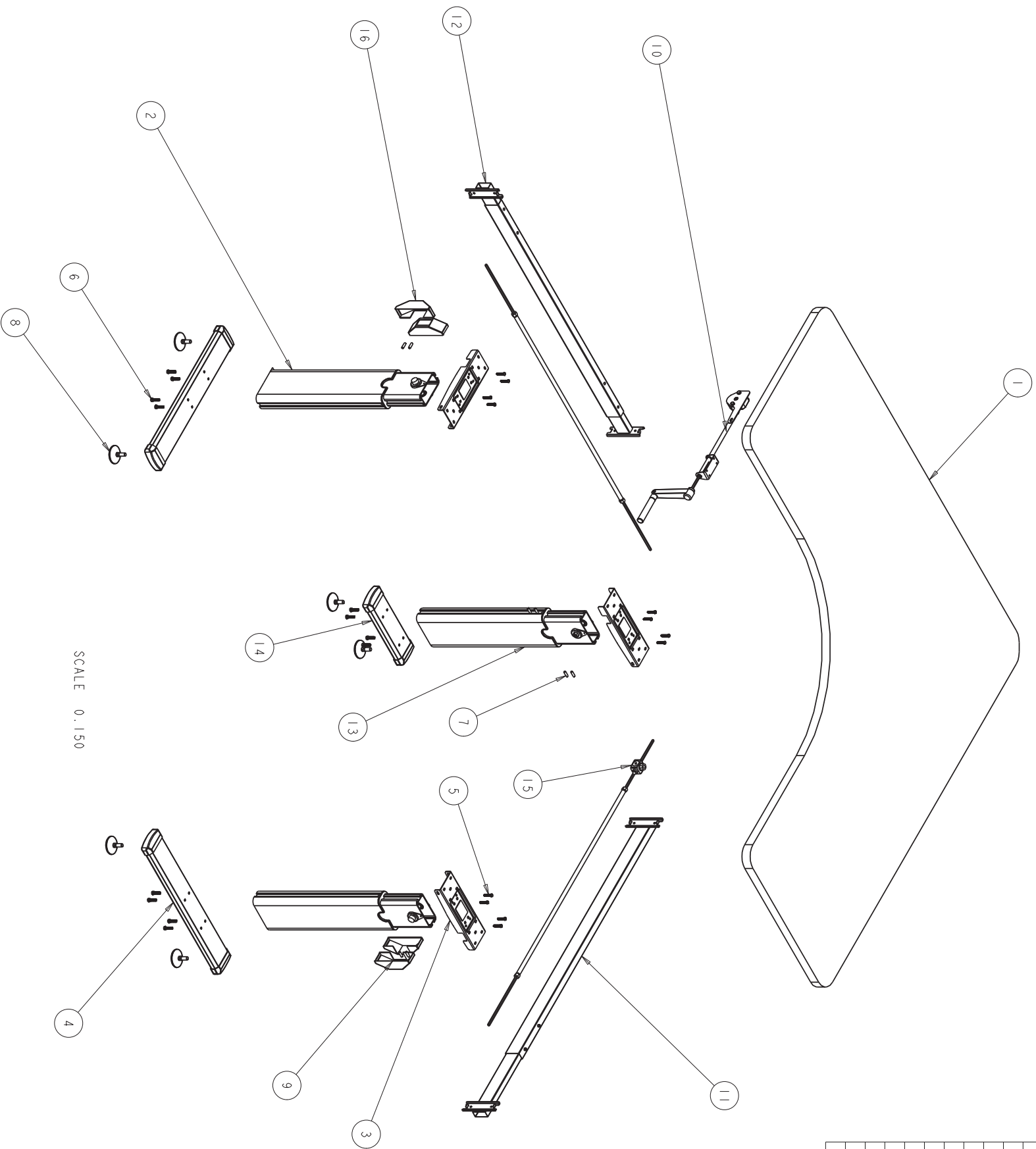


SCALE 0.250

S.NO	Part Number	Description
1	-	S3 - WORKSURFACE 29W
2	005204D	S3 - LEG
3	004234D	AVS - TOP PLATE
4	005213D	S3 - 26IN FOOT ASSEMBLY
5	004238D	AVS - M5 BOLT
6	004239D	AVS - M6 BOLT
7	004293D	AVS - SCREW
8	004237D	GLIDE
9	004250D	STRAIGHT STRETCHER COVER SET
10	005249D	HANDLE PACK-SIZE 2 WITH 4:1
11	004228D	AVS STRAIGHT STRETCHER ASSEMBLY

AdjustTables Series 3 Troubleshooting Guide

S3 - 90 DEGREE

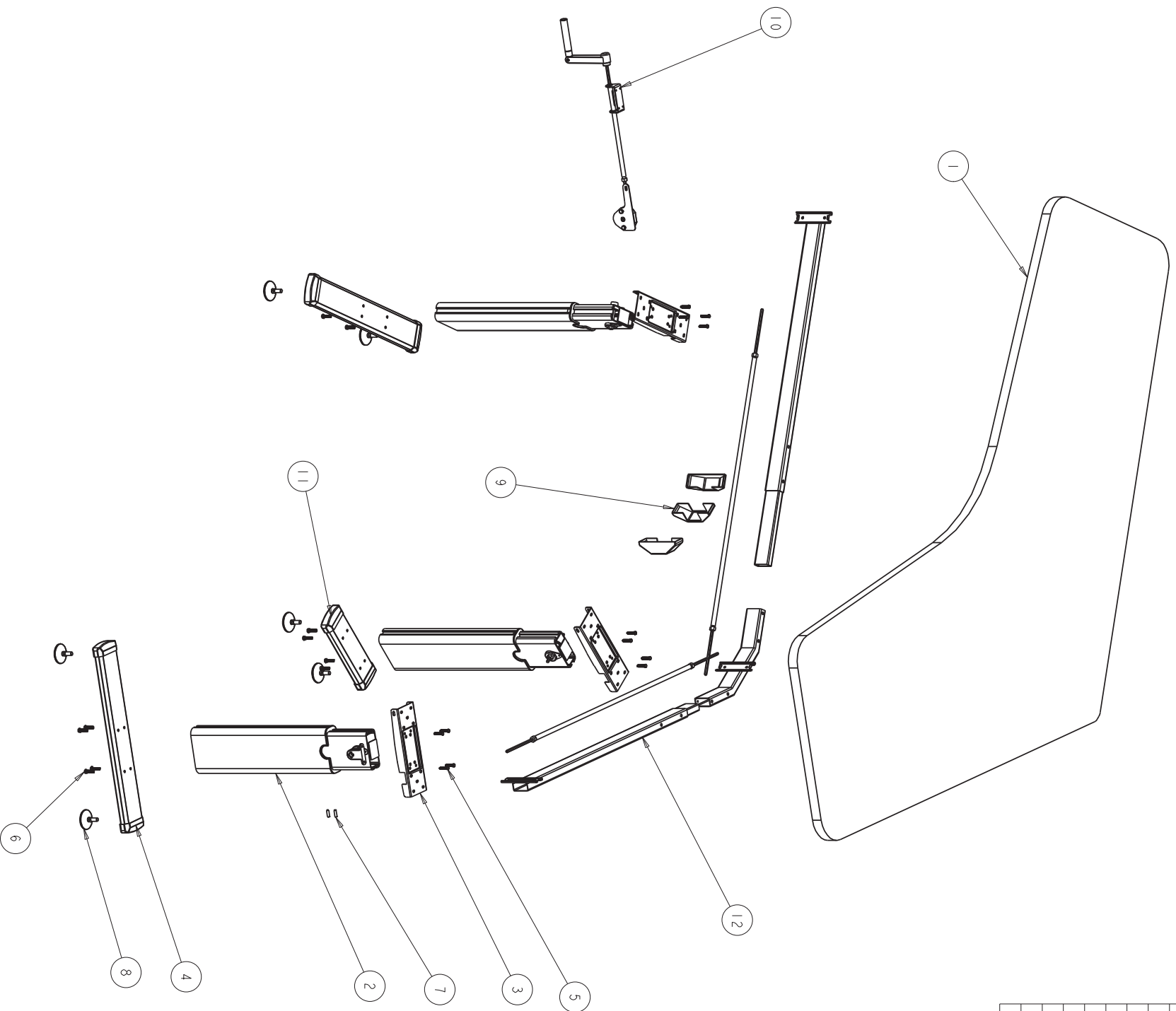


SCALE 0.150

S. NO	Part Number	Description
1	-	S3 - WORKSURFACE 90 DEGREE
2	005204D	S3 - LEG
3	004234D	AVS - TOP PLATE
4	005205D	S3 - 211IN FOOT ASSEMBLY
5	004238D	AVS - M5 BOLT
6	004239D	AVS - M6 BOLT
7	004293D	AVS - SCREW
8	004237D	GLIDE
9	004250D	STRAIGHT STRETCHER COVER SET
10	005250D	HANDLE PACK-SIZE 1 WITH 6:1
11	004228D	AVS STRAIGHT STRETCHER ASSEMBLY
12	004230D	AVS - EXTENSION STRETCHER ASSEMBLY
13	005242D	S3 - 90 DEGREE LEG
14	005215D	S3 - 101IN FOOT ASSEMBLY
15	005248D	S3 STABILIZER PACK - 90 TABLE
16	004264D	90 DEG STRETCHER COVER SET

AdjustTables Series 3 Troubleshooting Guide

S3 120 DEGREE



S. NO	Part Number	Description
1	-	S3 - WORKSURFACE 120 DEGREE
2	005204D	S3 - LEG
3	004234D	AVS - TOP PLATE
4	005205D	S3 - 21IN FOOT ASSEMBLY
5	004238D	AVS - M5 BOLT
6	004239D	AVS - M6 BOLT
7	004293D	AVS - SCREW
8	004237D	GLIDE
9	004250D	STRAIGHT STRETCHER COVER SET
10	005250D	HANDLE PACK-SIZE 1 WITH 6:1
11	005215D	S3 - 10IN FOOT ASSEMBLY
12	005337D	STRETCHER ASSY - 120 KIT

SCALE 0.150