

# Series 5 Adjustables

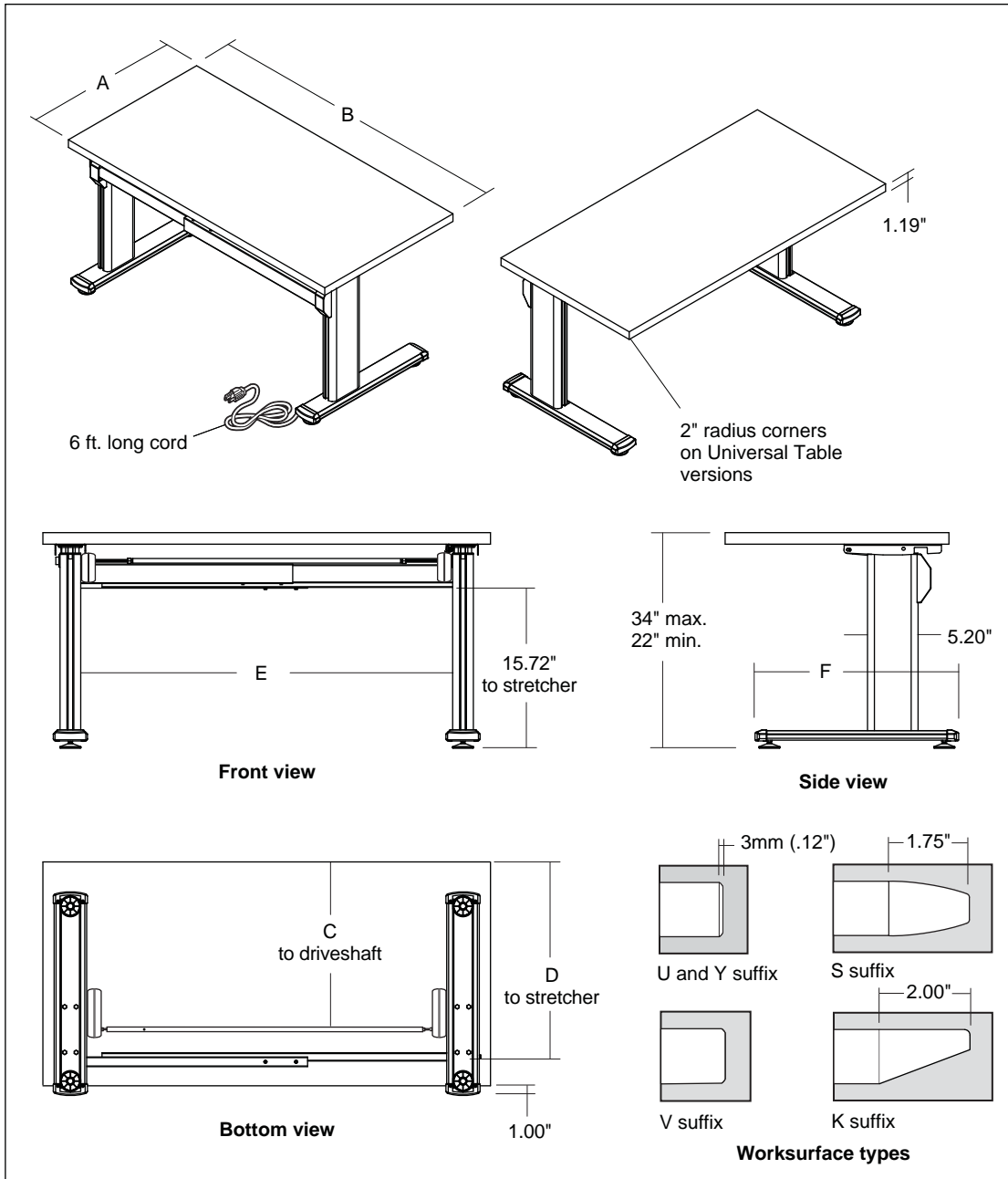
## Tables

### Dimensioned Line Drawings Rectangular Tables

| Style No.  | Dim. A | Dim. B | Dim. C | Dim. D | Dim. E | Dim. F |
|------------|--------|--------|--------|--------|--------|--------|
| A5RQ342323 | 23.00" | 34.00" | 16.00" | 18.15" | 26.22" | 21.00" |
| A5RQ402323 | 23.00" | 40.00" | 16.00" | 18.15" | 32.22" | 21.00" |
| A5RQ462323 | 23.00" | 46.00" | 16.00" | 18.15" | 38.22" | 21.00" |
| A5RQ522323 | 23.00" | 52.00" | 16.00" | 18.15" | 44.22" | 21.00" |
| A5RQ582323 | 23.00" | 58.00" | 16.00" | 18.15" | 50.22" | 21.00" |
| A5RQ642323 | 23.00" | 64.00" | 16.00" | 18.15" | 56.22" | 21.00" |
| A5RQ702323 | 23.00" | 70.00" | 16.00" | 18.15" | 62.22" | 21.00" |
| A5RQ762323 | 23.00" | 76.00" | 16.00" | 18.15" | 68.22" | 21.00" |
| A5RQ342929 | 29.00" | 34.00" | 17.55" | 20.60" | 26.22" | 26.00" |
| A5RQ402929 | 29.00" | 40.00" | 17.55" | 20.60" | 32.22" | 26.00" |
| A5RQ462929 | 29.00" | 46.00" | 17.55" | 20.60" | 38.22" | 26.00" |
| A5RQ522929 | 29.00" | 52.00" | 17.55" | 20.60" | 44.22" | 26.00" |
| A5RQ582929 | 29.00" | 58.00" | 17.55" | 20.60" | 50.22" | 26.00" |
| A5RQ642929 | 29.00" | 64.00" | 17.55" | 20.60" | 56.22" | 26.00" |
| A5RQ702929 | 29.00" | 70.00" | 17.55" | 20.60" | 62.22" | 26.00" |
| A5RQ762929 | 29.00" | 76.00" | 17.55" | 20.60" | 68.22" | 26.00" |

Note: Add the following suffixes to specify worksurface type:

- "U" for Universal Table
- "Y" for Universal Systems
- "K" for Knife Edge
- "S" for Urethane Profile
- "V" for Wood Veneer Profile



features



construction



materials



print this page

## Series 5 Adjustable Tables

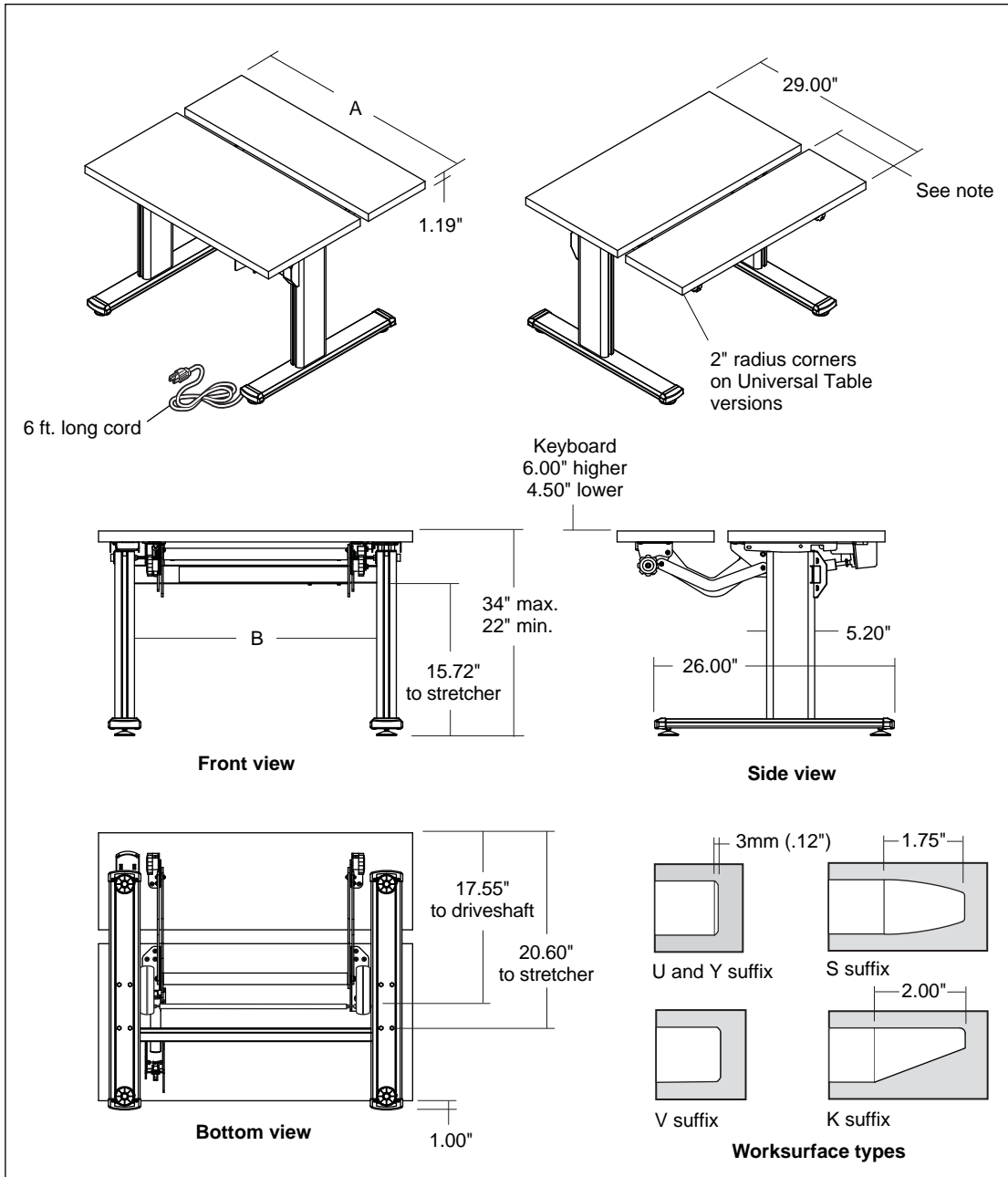
### Dimensioned Line Drawings Rectangular Bi-Level Tables

| Style No.  | Dim. A | Dim. B |
|------------|--------|--------|
| A5RD342929 | 34.00" | 26.22" |
| A5RD402929 | 40.00" | 32.22" |
| A5RD462929 | 46.00" | 38.22" |

Note: Add the following suffixes to specify worksurface type:

- "U" for Universal Table
- "Y" for Universal Systems
- "K" for Knife Edge
- "S" for Urethane Profile
- "V" for Wood Veneer Profile

Note: Keyboard worksurface is 10.50" deep except knife and urethane edge models, which are 10.00" deep.



◀ features



◀ construction



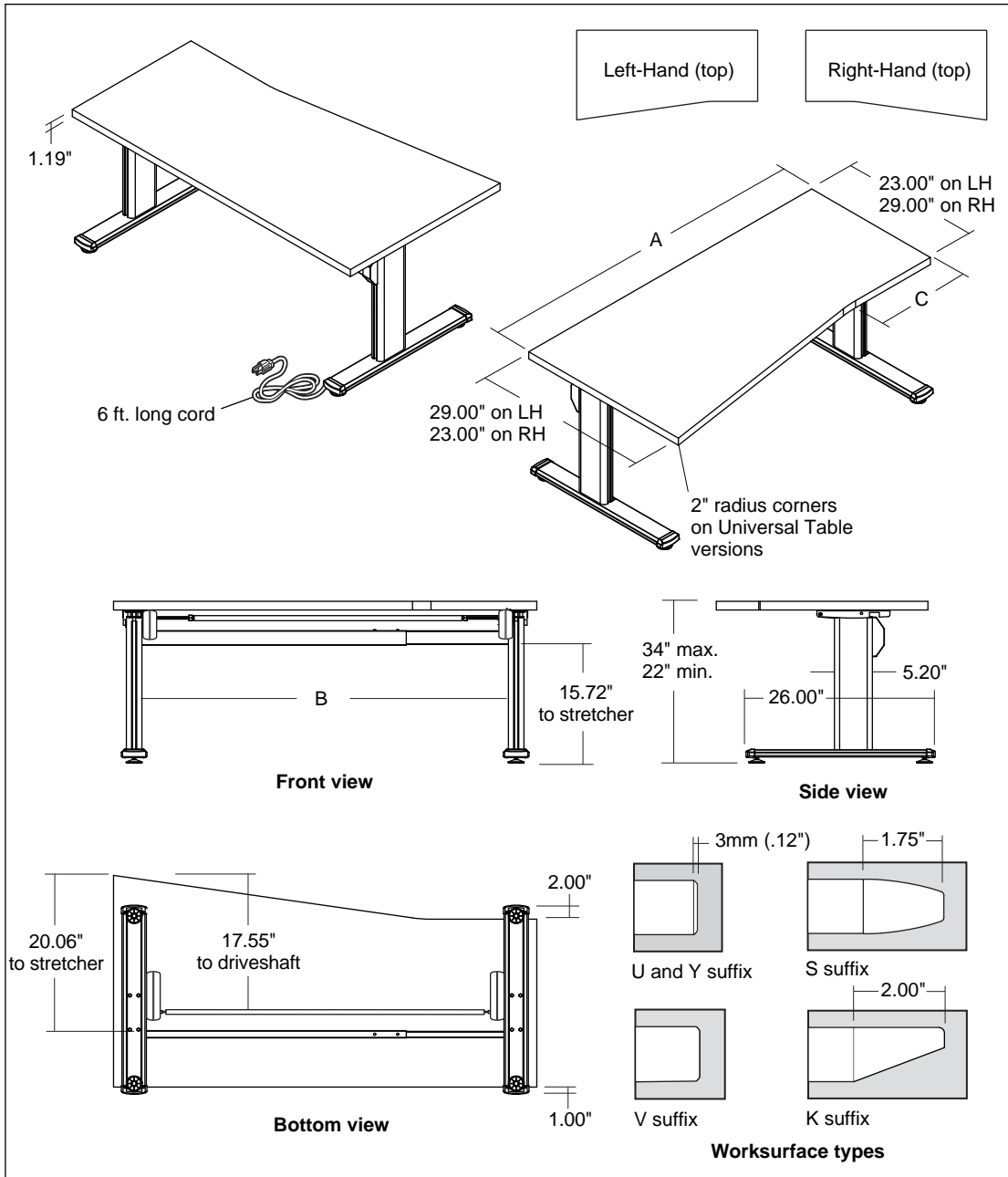
◀ materials



◀ print this page

**details**<sup>®</sup>  
A STEELCASE COMPANY

# Series 5 Adjustable Tables



## Dimensioned Line Drawings Taper Flat Tables

Style No.      Dim. A    Dim. B    Dim. C

### Left-Hand (shown)

|            |        |        |        |
|------------|--------|--------|--------|
| A5RT582923 | 58.00" | 54.21" | 14.50" |
| A5RT642923 | 64.00" | 56.22" | 16.00" |
| A5RT702923 | 70.00" | 62.22" | 17.50" |
| A5RT762923 | 76.00" | 71.25" | 19.00" |

### Right-Hand

|            |        |        |        |
|------------|--------|--------|--------|
| A5RT582329 | 58.00" | 54.21" | 14.50" |
| A5RT642329 | 64.00" | 56.22" | 16.00" |
| A5RT702329 | 70.00" | 62.22" | 17.50" |
| A5RT762329 | 76.00" | 71.25" | 19.00" |

Note: Add the following suffixes to specify worksurface type:

- "U" for Universal Table
- "Y" for Universal Systems
- "K" for Knife Edge
- "S" for Urethane Profile
- "V" for Wood Veneer Profile



features



construction



materials



print this page

**details**<sup>®</sup>  
A STEELCASE COMPANY

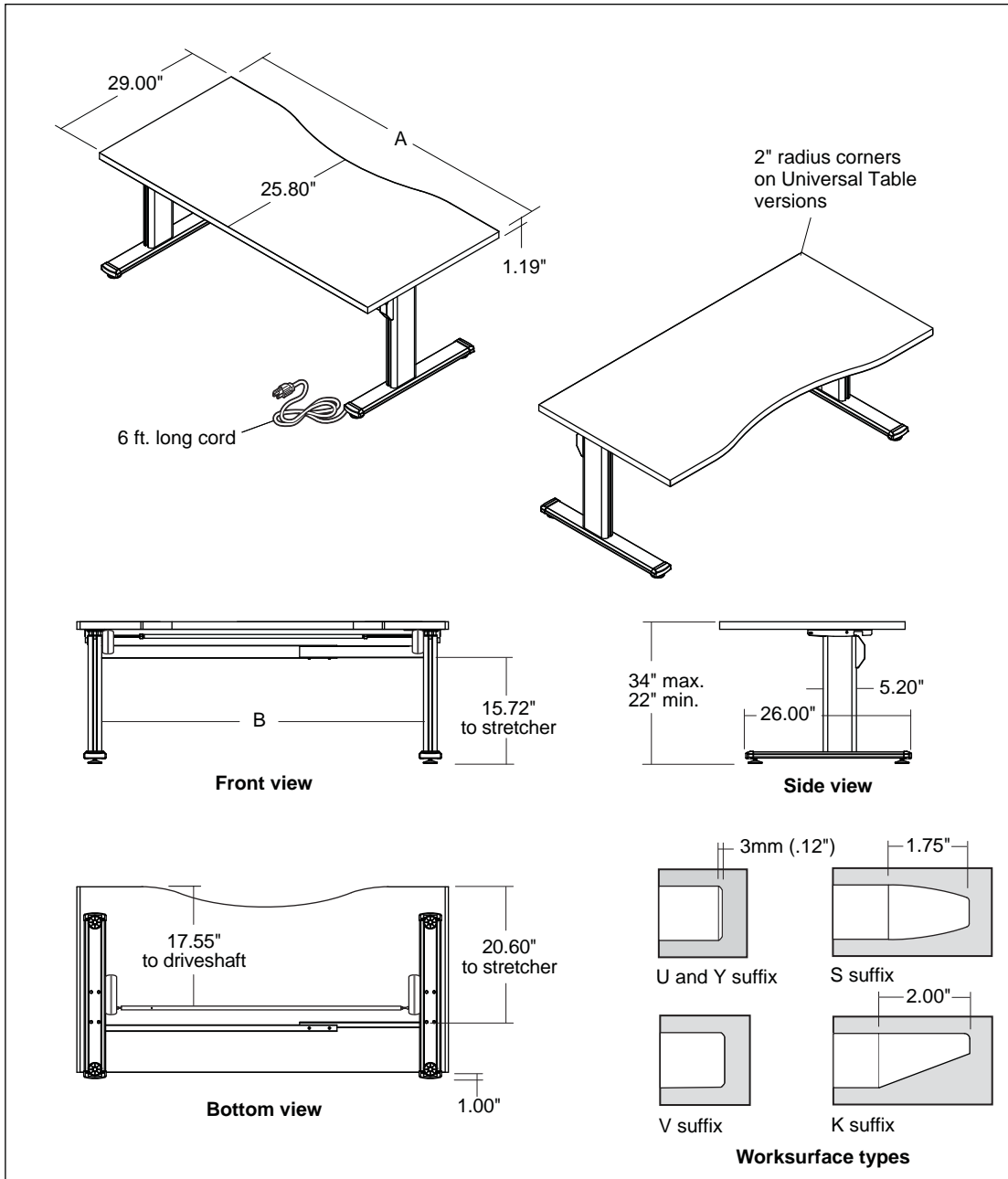
# Series 5 Adjustable Tables

## Dimensioned Line Drawings Concave Tables

| Style No.  | Dim. A | Dim. B |
|------------|--------|--------|
| A5CQ582929 | 58.00" | 50.22" |
| A5CQ642929 | 64.00" | 56.22" |
| A5CQ702929 | 70.00" | 62.22" |
| A5CQ762929 | 76.00" | 68.22" |

Note: Add the following suffixes to specify worksurface type:

- "U" for Universal Table
- "Y" for Universal Systems
- "K" for Knife Edge
- "S" for Urethane Profile
- "V" for Wood Veneer Profile



◀ features



◀ construction



◀ materials



◀ print this page

## Series 5 Adjustable Tables

### Dimensioned Line Drawings Bullet Tables

| Style No.  | Dim. A | Dim. B | Dim. C | Dim. D | Dim. E | Dim. F | Dim. G |
|------------|--------|--------|--------|--------|--------|--------|--------|
| A5BQ462323 | 23.00" | 46.00" | 16.00" | 17.55" | 29.55" | 21.00" | 9.93"  |
| A5BQ522323 | 23.00" | 52.00" | 16.00" | 17.55" | 35.55" | 21.00" | 9.93"  |
| A5BQ582323 | 23.00" | 58.00" | 16.00" | 17.55" | 41.55" | 21.00" | 9.93"  |
| A5BQ642323 | 23.00" | 64.00" | 16.00" | 17.55" | 47.55" | 21.00" | 9.93"  |
| A5BQ702323 | 23.00" | 70.00" | 16.00" | 17.55" | 50.55" | 21.00" | 9.93"  |
| A5BQ762323 | 23.00" | 76.00" | 16.00" | 17.55" | 56.55" | 21.00" | 9.93"  |
| A5BQ462929 | 29.00" | 46.00" | 18.15" | 20.60" | 29.55" | 26.00" | 12.93" |
| A5BQ522929 | 29.00" | 52.00" | 18.15" | 20.60" | 35.55" | 26.00" | 12.93" |
| A5BQ582929 | 29.00" | 58.00" | 18.15" | 20.60" | 41.55" | 26.00" | 12.93" |
| A5BQ642929 | 29.00" | 64.00" | 18.15" | 20.60" | 47.55" | 26.00" | 12.93" |
| A5BQ702929 | 29.00" | 70.00" | 18.15" | 20.60" | 50.55" | 26.00" | 12.93" |
| A5BQ762929 | 29.00" | 76.00" | 18.15" | 20.60" | 56.55" | 26.00" | 12.93" |

Note: Add the following suffixes to specify worksurface type:

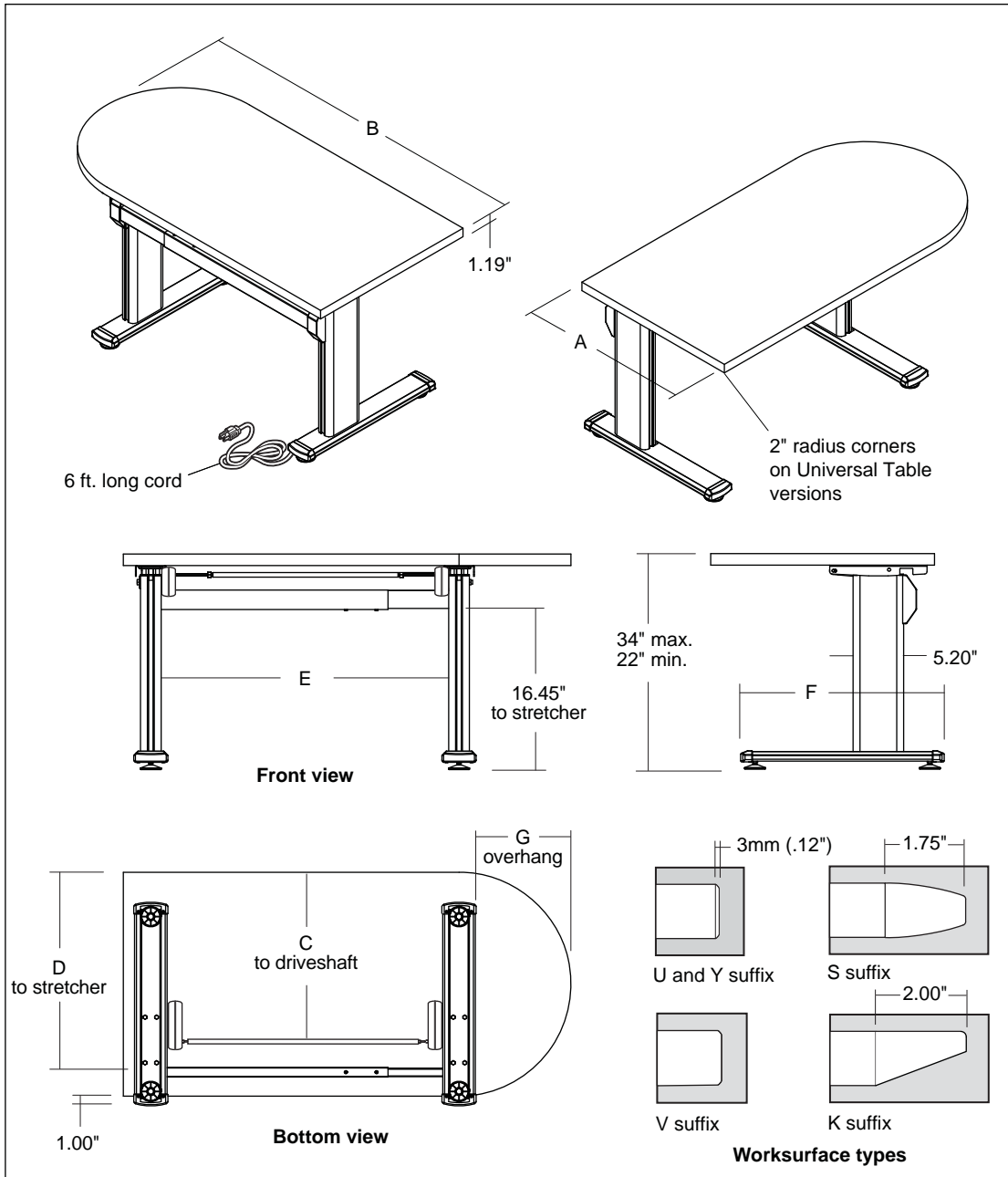
"U" for Universal Table

"Y" for Universal Systems

"K" for Knife Edge

"S" for Urethane Profile

"V" for Wood Veneer Profile



◀ features



◀ construction



◀ materials



◀ print this page

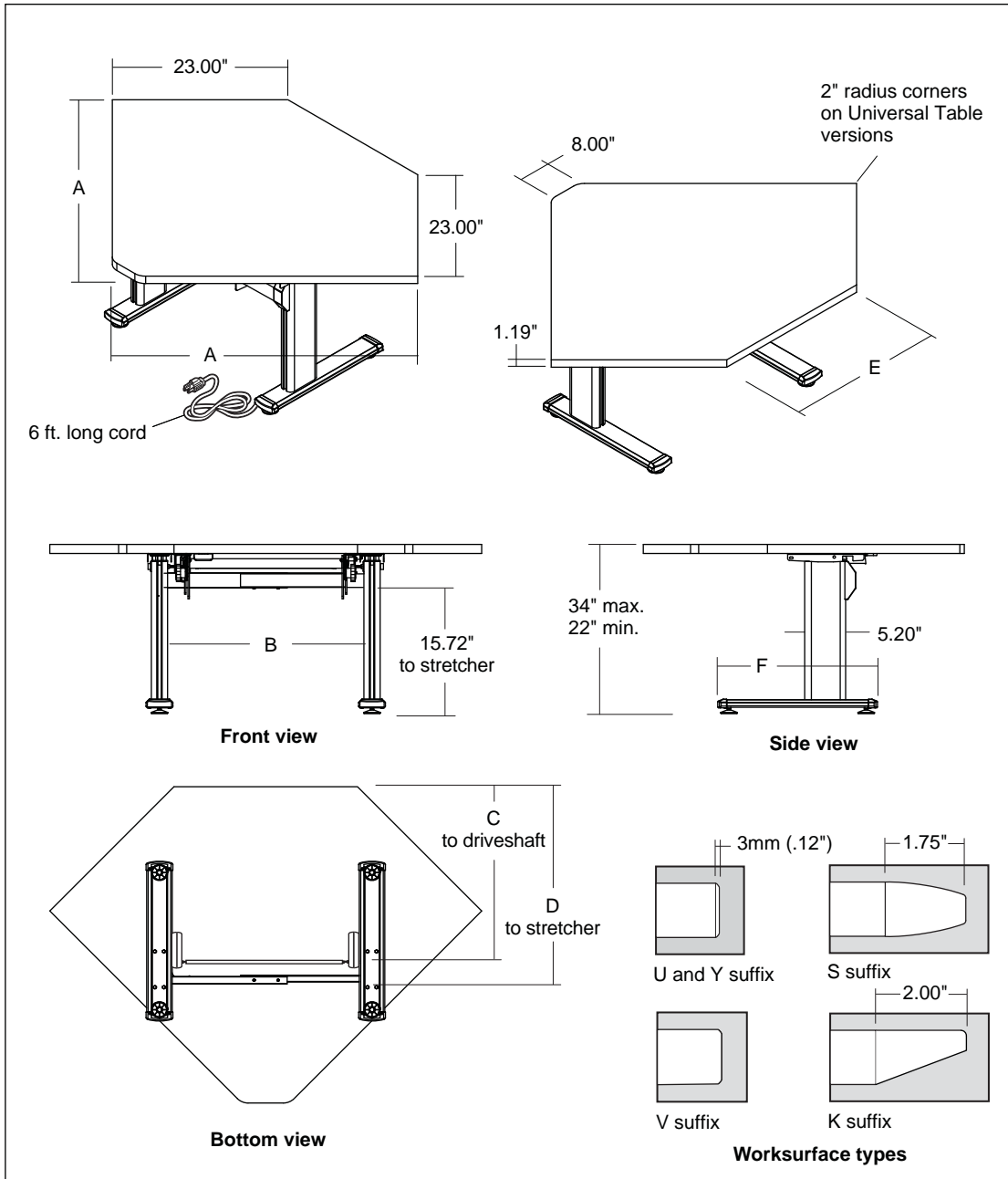
# Series 5 Adjustable Tables

## Dimensioned Line Drawings 90° Corner Tables

| Style No.    | Dim. A | Dim. B | Dim. C | Dim. D | Dim. E | Dim. F |
|--------------|--------|--------|--------|--------|--------|--------|
| A5LQ40234023 | 40.00" | 25.18" | 23.90" | 26.95" | 24.00" | 21.00" |
| A5LQ46234623 | 46.00" | 26.26" | 23.16" | 26.21" | 32.50" | 26.00" |

Note: Add the following suffixes to specify worksurface type:

- "U" for Universal Table
- "Y" for Universal Systems
- "K" for Knife Edge
- "S" for Urethane Profile
- "V" for Wood Veneer Profile



◀ features



◀ construction



◀ materials



◀ print this page

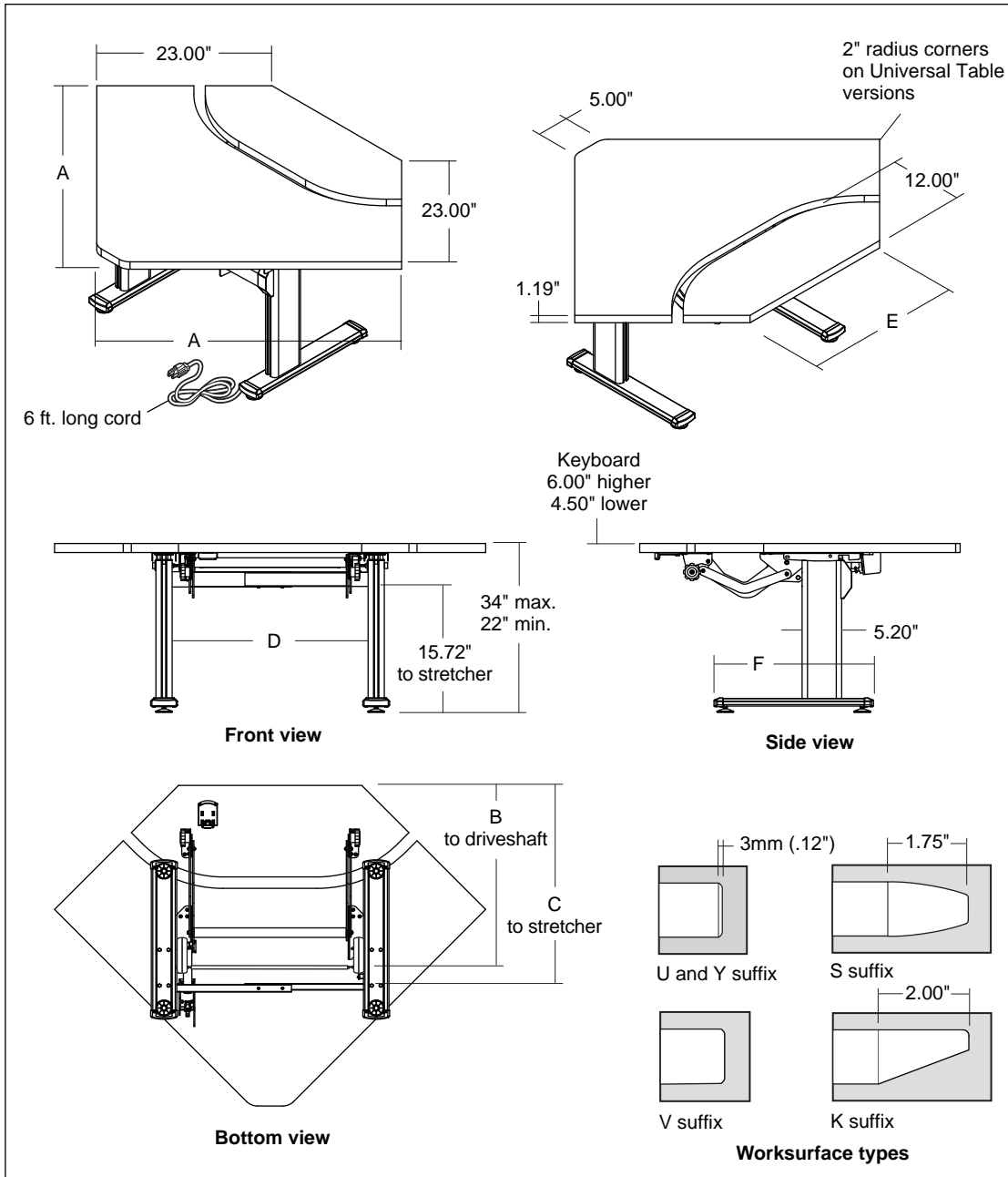
# Series 5 Adjustable Tables

## Dimensioned Line Drawings 90° Corner Bi-Level Tables

| Style No.    | Dim. A | Dim. B | Dim. C | Dim. D | Dim. E | Dim. F |
|--------------|--------|--------|--------|--------|--------|--------|
| A5LD40234023 | 40.00" | 23.67" | 26.72" | 25.64" | 24.00" | 21.00" |
| A5LD46234623 | 46.00" | 23.16" | 26.21" | 26.26" | 32.50" | 26.00" |

Note: Add the following suffixes to specify worksurface type:

- "U" for Universal Table
- "Y" for Universal Systems
- "K" for Knife Edge
- "S" for Urethane Profile
- "V" for Wood Veneer Profile



◀ features



◀ construction

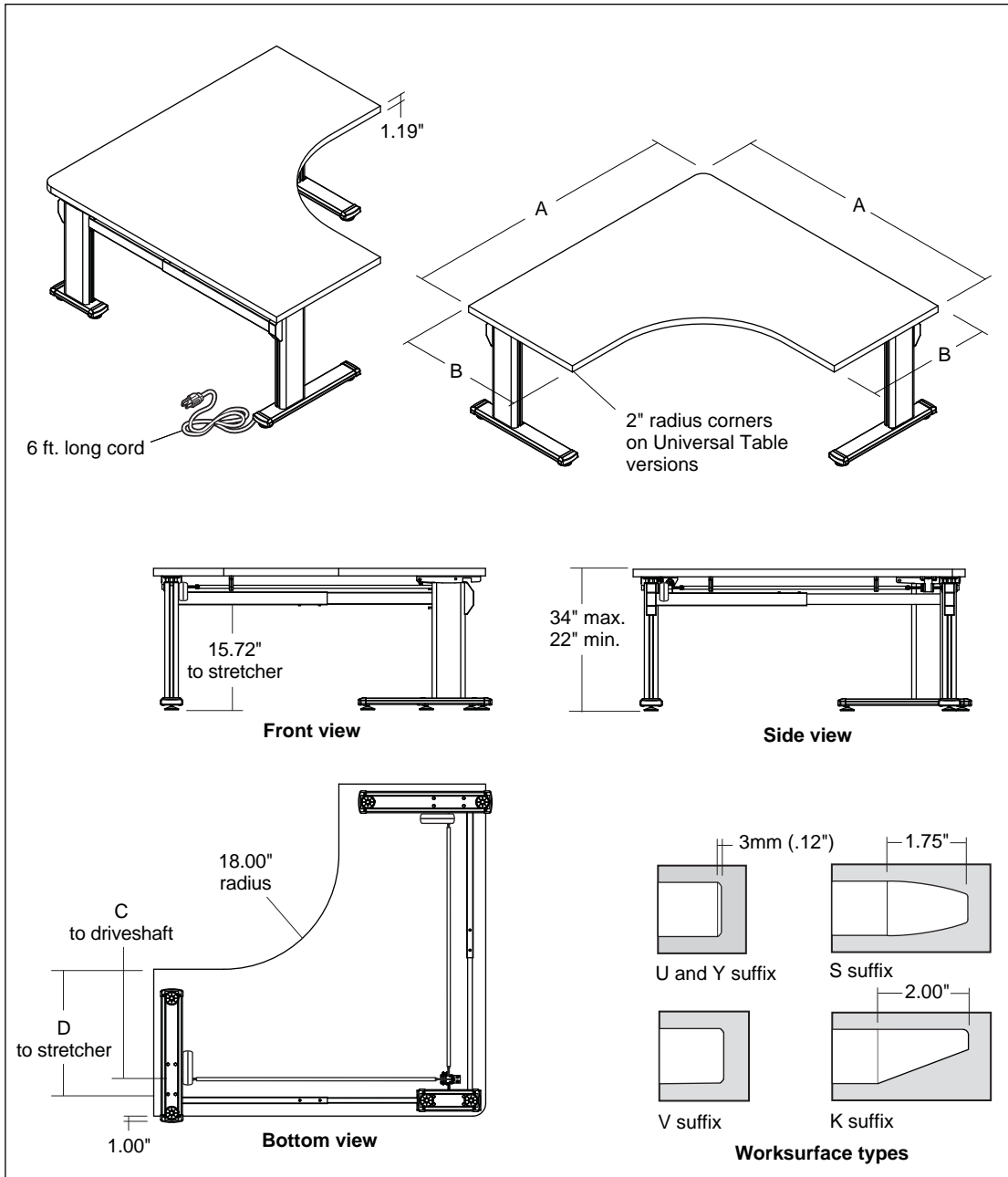


◀ materials



◀ print this page

# Series 5 Adjustable Tables



## Dimensioned Line Drawings 90° Equal Corner Tables

| Style No.    | Dim. A | Dim. B | Dim. C | Dim. D |
|--------------|--------|--------|--------|--------|
| A5LQ52235223 | 52.00" | 23.00" | 16.00" | 18.15" |
| A5LQ58235823 | 58.00" | 23.00" | 16.00" | 18.15" |
| A5LQ64236423 | 64.00" | 23.00" | 16.00" | 18.15" |
| A5LQ70237023 | 70.00" | 23.00" | 16.00" | 18.15" |
| A5LQ76237623 | 76.00" | 23.00" | 16.00" | 18.15" |
| A5LQ52295229 | 52.00" | 29.00" | 17.55" | 20.60" |
| A5LQ58295829 | 58.00" | 29.00" | 17.55" | 20.60" |
| A5LQ64296429 | 64.00" | 29.00" | 17.55" | 20.60" |

Note: Add the following suffixes to specify worksurface type:

- "U" for Universal Table
- "Y" for Universal Systems
- "K" for Knife Edge
- "S" for Urethane Profile
- "V" for Wood Veneer Profile



features



construction



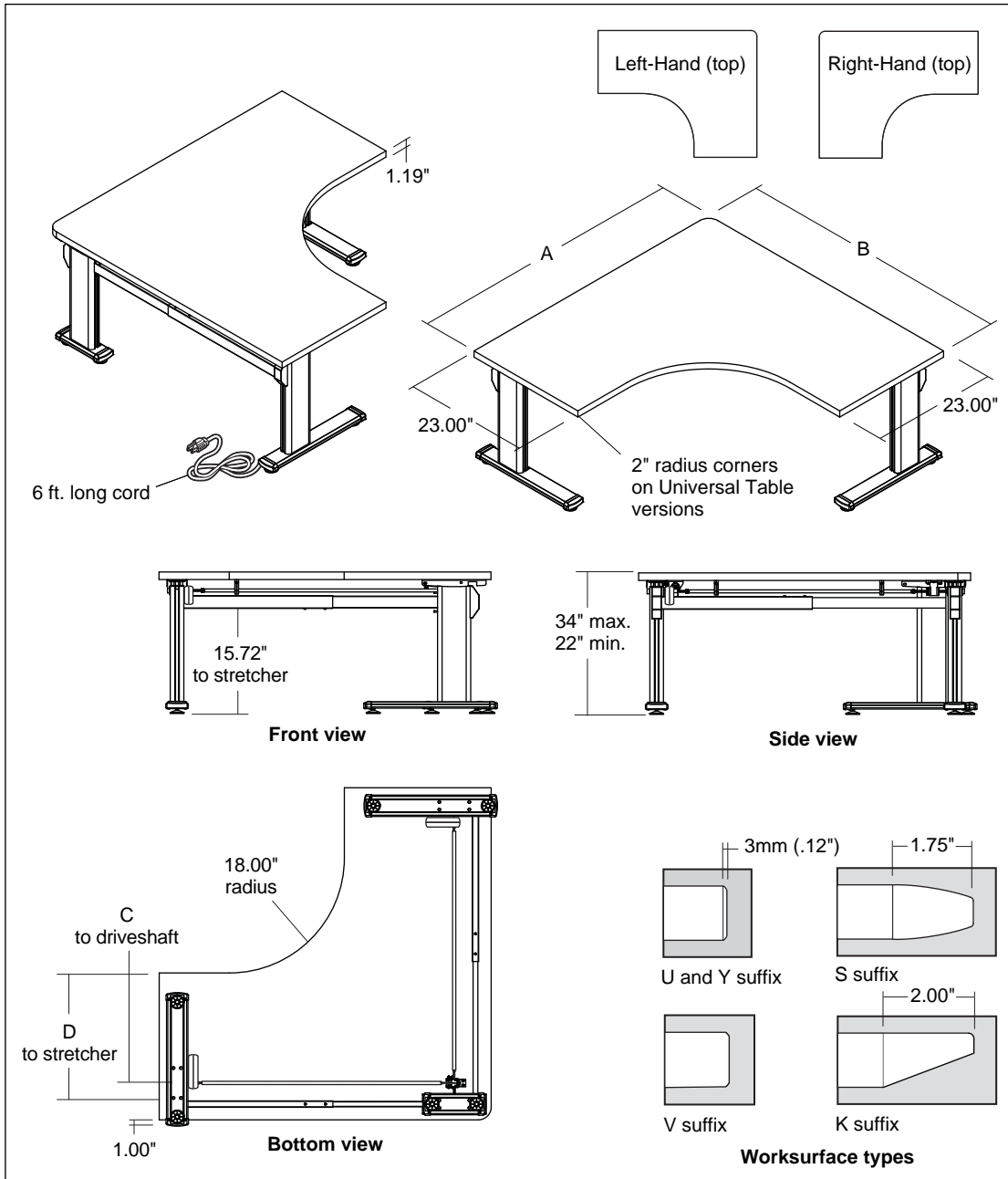
materials



print this page

# Series 5 Adjustable Tables

## Dimensioned Line Drawings 90° Extended Corner Tables - 23"D



| Style No. | Dim. A | Dim. B |
|-----------|--------|--------|
|-----------|--------|--------|

### Left-Hand

|              |        |        |
|--------------|--------|--------|
| A5LE58234023 | 58.00" | 40.00" |
| A5LE58234623 | 58.00" | 46.00" |
| A5LE64234023 | 64.00" | 40.00" |
| A5LE64234623 | 64.00" | 46.00" |
| A5LE64235823 | 64.00" | 58.00" |
| A5LE70234023 | 70.00" | 40.00" |
| A5LE70234623 | 70.00" | 46.00" |
| A5LE70235823 | 70.00" | 58.00" |
| A5LE76234023 | 76.00" | 40.00" |
| A5LE76234623 | 76.00" | 46.00" |
| A5LE76235823 | 76.00" | 58.00" |

### Right-Hand

|              |        |        |
|--------------|--------|--------|
| A5LE40235823 | 40.00" | 58.00" |
| A5LE40236423 | 40.00" | 64.00" |
| A5LE40237023 | 40.00" | 70.00" |
| A5LE40237623 | 40.00" | 76.00" |
| A5LE46235823 | 46.00" | 58.00" |
| A5LE46236423 | 46.00" | 64.00" |
| A5LE46237023 | 46.00" | 70.00" |
| A5LE46237623 | 46.00" | 76.00" |
| A5LE58236423 | 58.00" | 64.00" |
| A5LE58237023 | 58.00" | 70.00" |
| A5LE58237623 | 58.00" | 76.00" |

Note: Add the following suffixes to specify worksurface type:

- "U" for Universal Table
- "Y" for Universal Systems
- "K" for Knife Edge
- "S" for Urethane Profile
- "V" for Wood Veneer Profile



features



construction



materials



print this page

**details**<sup>®</sup>  
A STEELCASE COMPANY

# Series 5 Adjustables Tables

## Dimensioned Line Drawings 90° Extended Corner Tables - 29"D

Style No.      Dim. A      Dim. B

### Left-Hand

A5LE64295829    64.00"    58.00"

A5LE70295829    70.00"    58.00"

A5LE76295829    76.00"    58.00"

### Right-Hand

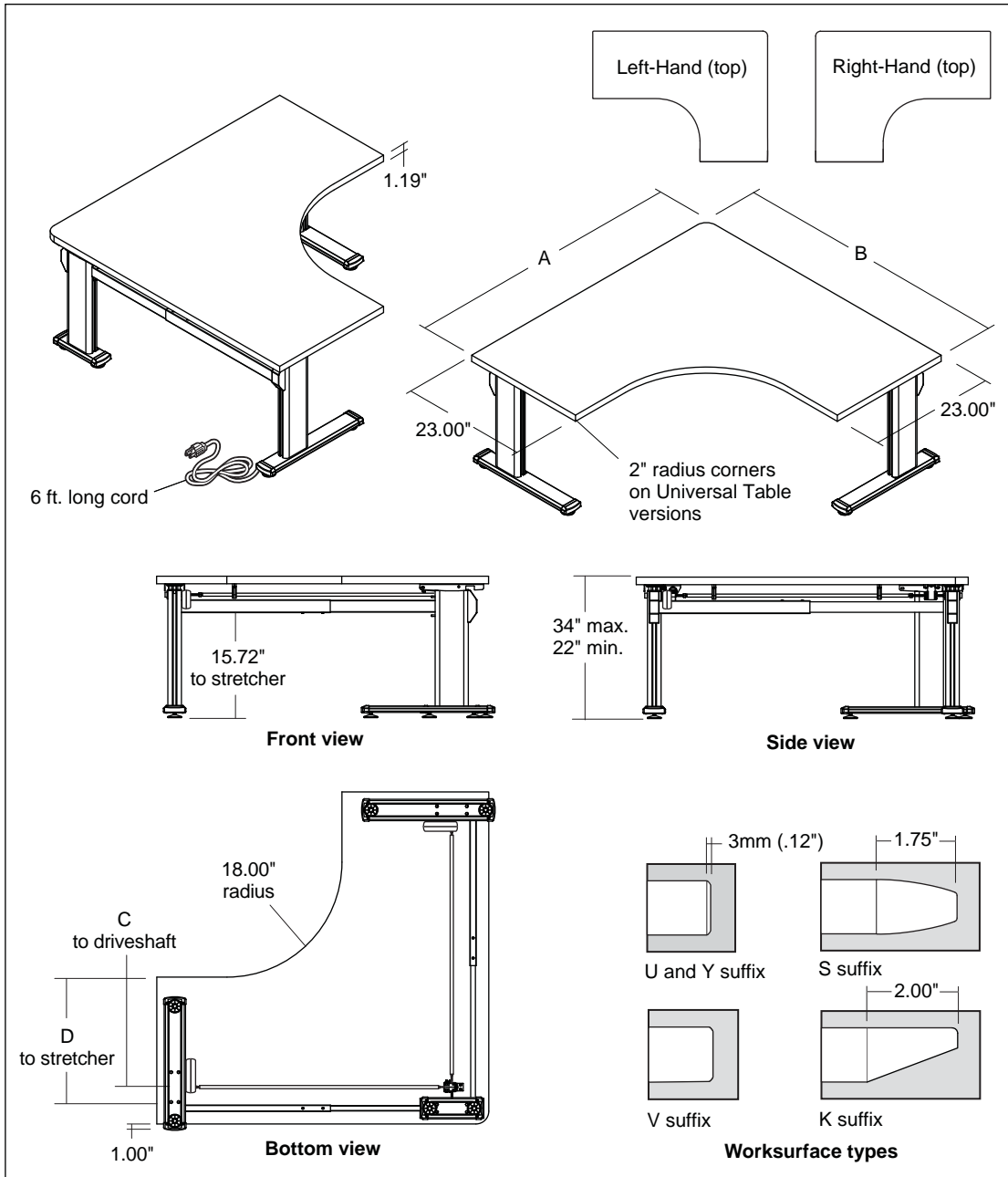
A5LE58296429    58.00"    64.00"

A5LE58297029    58.00"    70.00"

A5LE58297629    58.00"    76.00"

Note: Add the following suffixes to specify worksurface type:

- "U" for Universal Table
- "Y" for Universal Systems
- "K" for Knife Edge
- "S" for Urethane Profile
- "V" for Wood Veneer Profile



features



construction



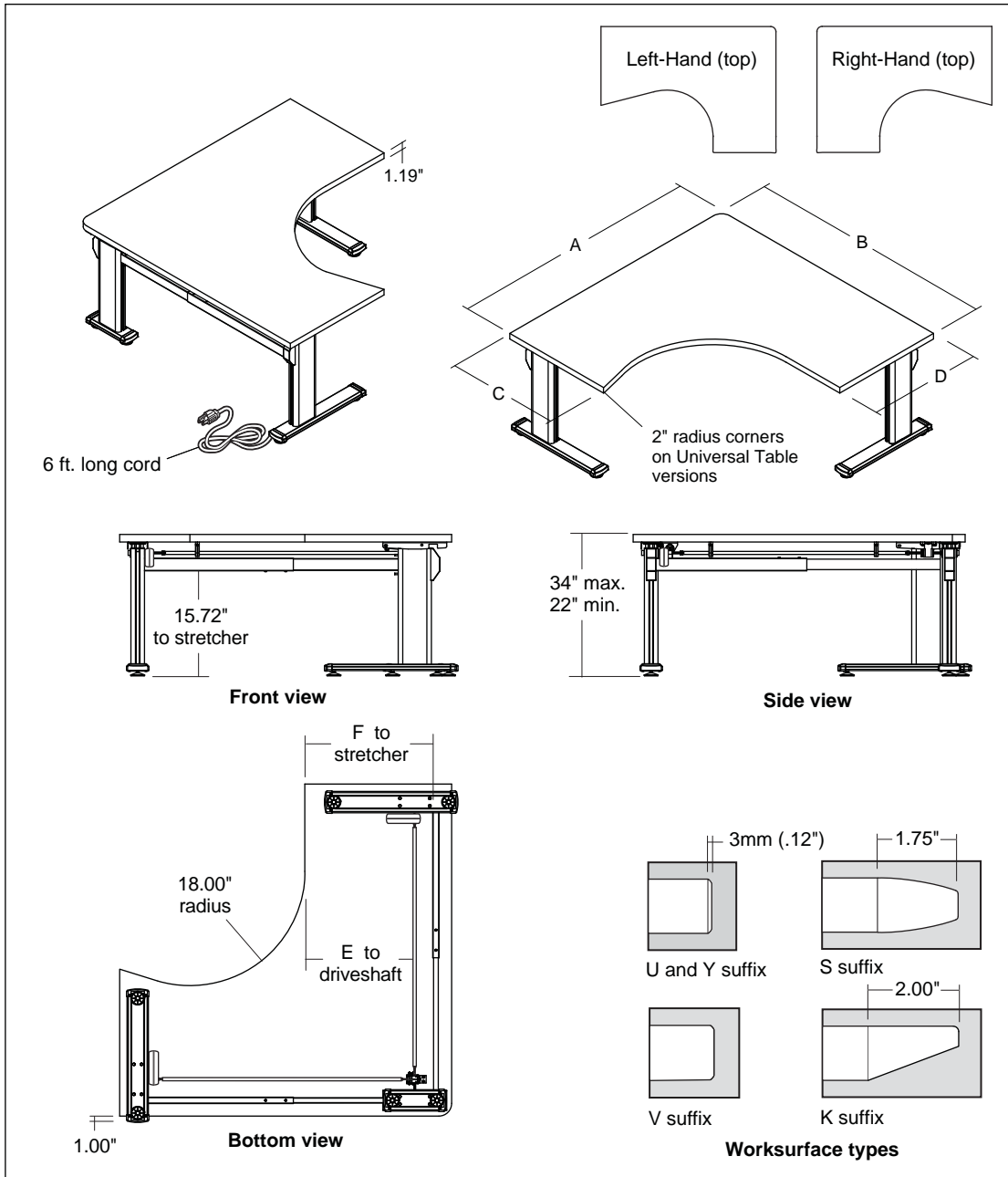
materials



print this page

# Series 5 Adjustable Tables

## Dimensioned Line Drawings 90° Boot Tables



| Style No.        | Dim. A | Dim. B | Dim. C | Dim. D | Dim. E | Dim. F |
|------------------|--------|--------|--------|--------|--------|--------|
| <b>Left-Hand</b> |        |        |        |        |        |        |
| A5LE64295823     | 64.00" | 58.00" | 29.00" | 23.00" | 16.00" | 17.55" |
| A5LE70294023     | 70.00" | 40.00" | 29.00" | 23.00" | 16.00" | 17.55" |
| A5LE70294623     | 70.00" | 46.00" | 29.00" | 23.00" | 16.00" | 17.55" |
| A5LE70295823     | 70.00" | 58.00" | 29.00" | 23.00" | 16.00" | 17.55" |
| A5LE76294023     | 76.00" | 40.00" | 29.00" | 23.00" | 16.00" | 17.55" |
| A5LE76294623     | 76.00" | 46.00" | 29.00" | 23.00" | 16.00" | 17.55" |
| A5LE76295823     | 76.00" | 58.00" | 29.00" | 23.00" | 16.00" | 17.55" |

|                   |        |        |        |        |        |        |
|-------------------|--------|--------|--------|--------|--------|--------|
| <b>Right-Hand</b> |        |        |        |        |        |        |
| A5LE40237029      | 40.00" | 70.00" | 23.00" | 29.00" | 18.15" | 20.60" |
| A5LE40237629      | 40.00" | 76.00" | 23.00" | 29.00" | 18.15" | 20.60" |
| A5LE46237029      | 46.00" | 70.00" | 23.00" | 29.00" | 18.15" | 20.60" |
| A5LE46237629      | 46.00" | 76.00" | 23.00" | 29.00" | 18.15" | 20.60" |
| A5LE58236429      | 58.00" | 64.00" | 23.00" | 29.00" | 18.15" | 20.60" |
| A5LE58237029      | 58.00" | 70.00" | 23.00" | 29.00" | 18.15" | 20.60" |
| A5LE58237629      | 58.00" | 76.00" | 23.00" | 29.00" | 18.15" | 20.60" |

Note: Add the following suffixes to specify worksurface type:

- "U" for Universal Table
- "Y" for Universal Systems
- "K" for Knife Edge
- "S" for Urethane Profile
- "V" for Wood Veneer Profile



features



construction



materials

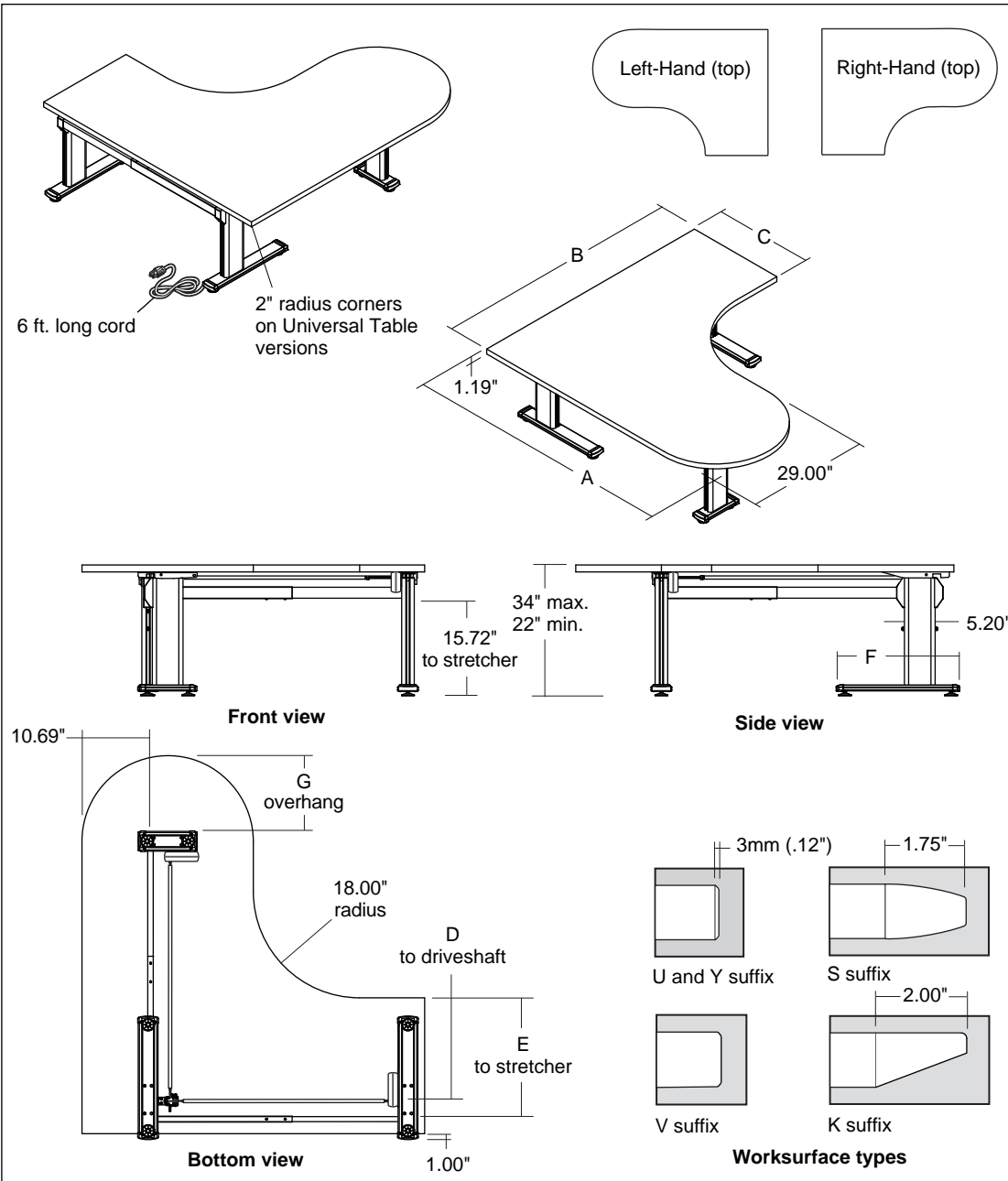


print this page

**details**<sup>®</sup>  
A STEELCASE COMPANY

# Series 5 Adjustable Tables

## Dimensioned Line Drawings P-Tables



| Style No.         | Dim. A | Dim. B | Dim. C | Dim. D | Dim. E | Dim. F | Dim. G |
|-------------------|--------|--------|--------|--------|--------|--------|--------|
| <b>Left-Hand</b>  |        |        |        |        |        |        |        |
| A5PE64295823      | 64.00" | 58.00" | 23.00" | 16.00" | 18.55" | 21.00" | 9.93"  |
| A5PE70294623      | 70.00" | 46.00" | 23.00" | 16.00" | 18.55" | 21.00" | 9.93"  |
| A5PE70295823      | 70.00" | 58.00" | 23.00" | 16.00" | 18.55" | 21.00" | 9.93"  |
| A5PE76294623      | 76.00" | 46.00" | 23.00" | 16.00" | 18.55" | 21.00" | 9.93"  |
| A5PE76295823      | 76.00" | 58.00" | 23.00" | 16.00" | 18.55" | 21.00" | 9.93"  |
| <b>Right-Hand</b> |        |        |        |        |        |        |        |
| A5PE46237029      | 46.00" | 70.00" | 23.00" | 16.00" | 18.55" | 21.00" | 9.93"  |
| A5PE46237629      | 46.00" | 76.00" | 23.00" | 16.00" | 18.55" | 21.00" | 9.93"  |
| A5PE58236429      | 58.00" | 64.00" | 23.00" | 16.00" | 18.55" | 21.00" | 9.93"  |
| A5PE58237029      | 58.00" | 70.00" | 23.00" | 16.00" | 18.55" | 21.00" | 9.93"  |
| A5PE58237629      | 58.00" | 76.00" | 23.00" | 16.00" | 18.55" | 21.00" | 9.93"  |
| A5PE58296429      | 58.00" | 64.00" | 29.00" | 17.55" | 20.60" | 26.00" | 12.93" |
| A5PE58297029      | 58.00" | 70.00" | 29.00" | 17.55" | 20.60" | 26.00" | 12.93" |
| A5PE58297629      | 58.00" | 76.00" | 29.00" | 17.55" | 20.60" | 26.00" | 12.93" |

Note: Add the following suffixes to specify worksurface type:

- "U" for Universal Table
- "Y" for Universal Systems
- "K" for Knife Edge
- "S" for Urethane Profile
- "V" for Wood Veneer Profile



features



construction



materials

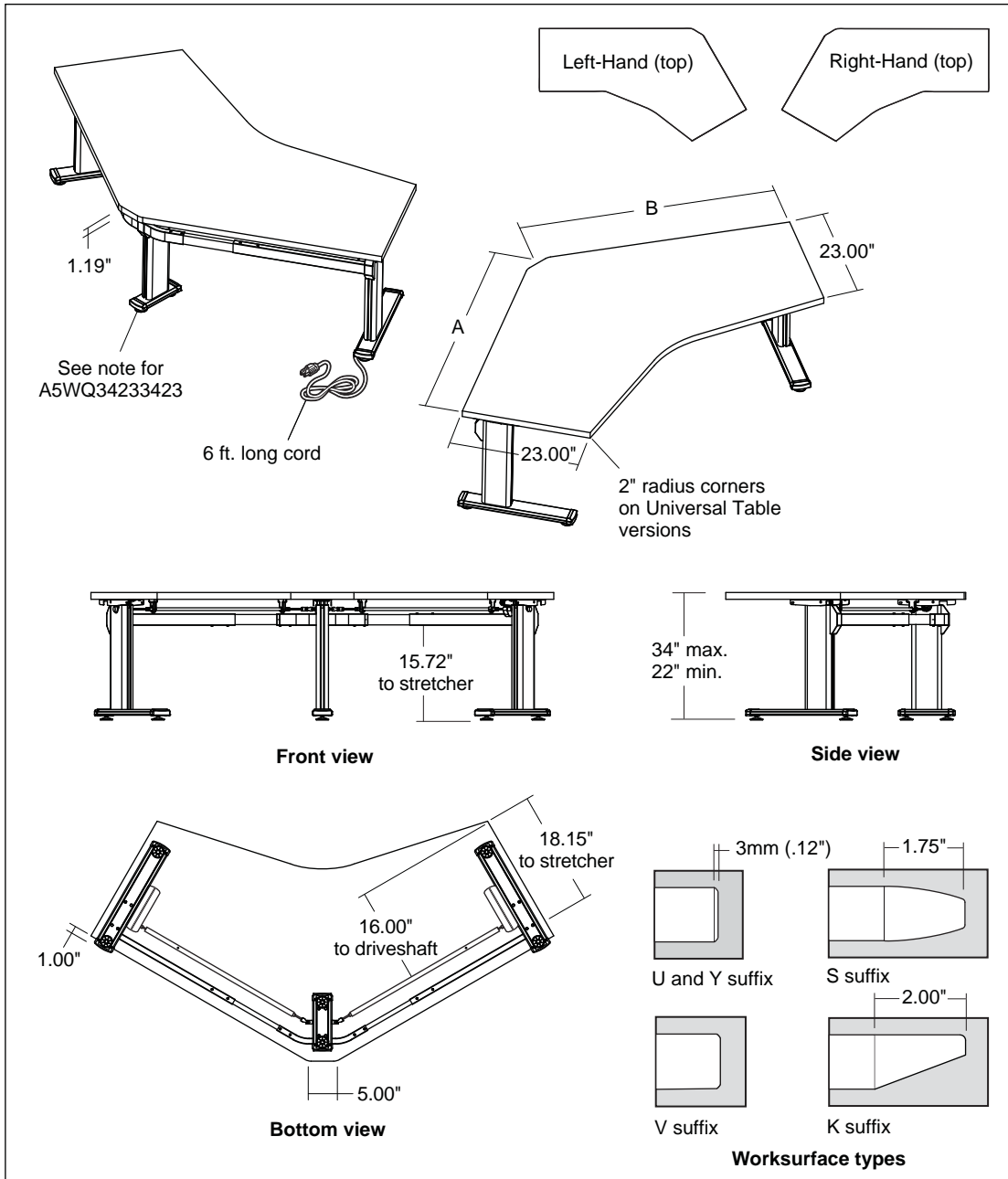


print this page

**details**<sup>®</sup>  
A STEELCASE COMPANY

# Series 5 Adjustable Tables

## Dimensioned Line Drawings 120° Tables



Style No.      Dim. A      Dim. B

### Equal

|              |        |        |                                 |
|--------------|--------|--------|---------------------------------|
| A5WQ34233423 | 34.42" | 34.42" | Note: This model has 2-leg base |
| A5WQ40234023 | 40.42" | 40.42" |                                 |
| A5WQ46234623 | 46.42" | 46.42" |                                 |
| A5WQ52235223 | 52.42" | 52.42" |                                 |
| A5WQ58235823 | 58.42" | 58.42" |                                 |
| A5WQ64236423 | 64.42" | 64.42" |                                 |

### Extended Left-Hand

|              |        |        |
|--------------|--------|--------|
| A5WE58233423 | 58.42" | 34.42" |
| A5WE58234023 | 58.42" | 40.42" |
| A5WE58234623 | 58.42" | 46.42" |
| A5WE64233423 | 64.42" | 34.42" |
| A5WE64234023 | 64.42" | 40.42" |
| A5WE64234623 | 64.42" | 46.42" |
| A5WE64235823 | 64.42" | 58.42" |

### Extended Right-Hand

|              |        |        |
|--------------|--------|--------|
| A5WE34235823 | 34.42" | 58.42" |
| A5WE34236423 | 34.42" | 64.42" |
| A5WE40235823 | 40.42" | 58.42" |
| A5WE40236423 | 40.42" | 64.42" |
| A5WE46235823 | 46.42" | 58.42" |
| A5WE46236423 | 46.42" | 64.42" |
| A5WE58236423 | 58.42" | 64.42" |

Note: Add the following suffixes to specify worksurface type:

- "U" for Universal Table
- "Y" for Universal Systems
- "K" for Knife Edge
- "S" for Urethane Profile
- "V" for Wood Veneer Profile



features



construction



materials



print this page

**details**<sup>®</sup>  
A STEELCASE COMPANY

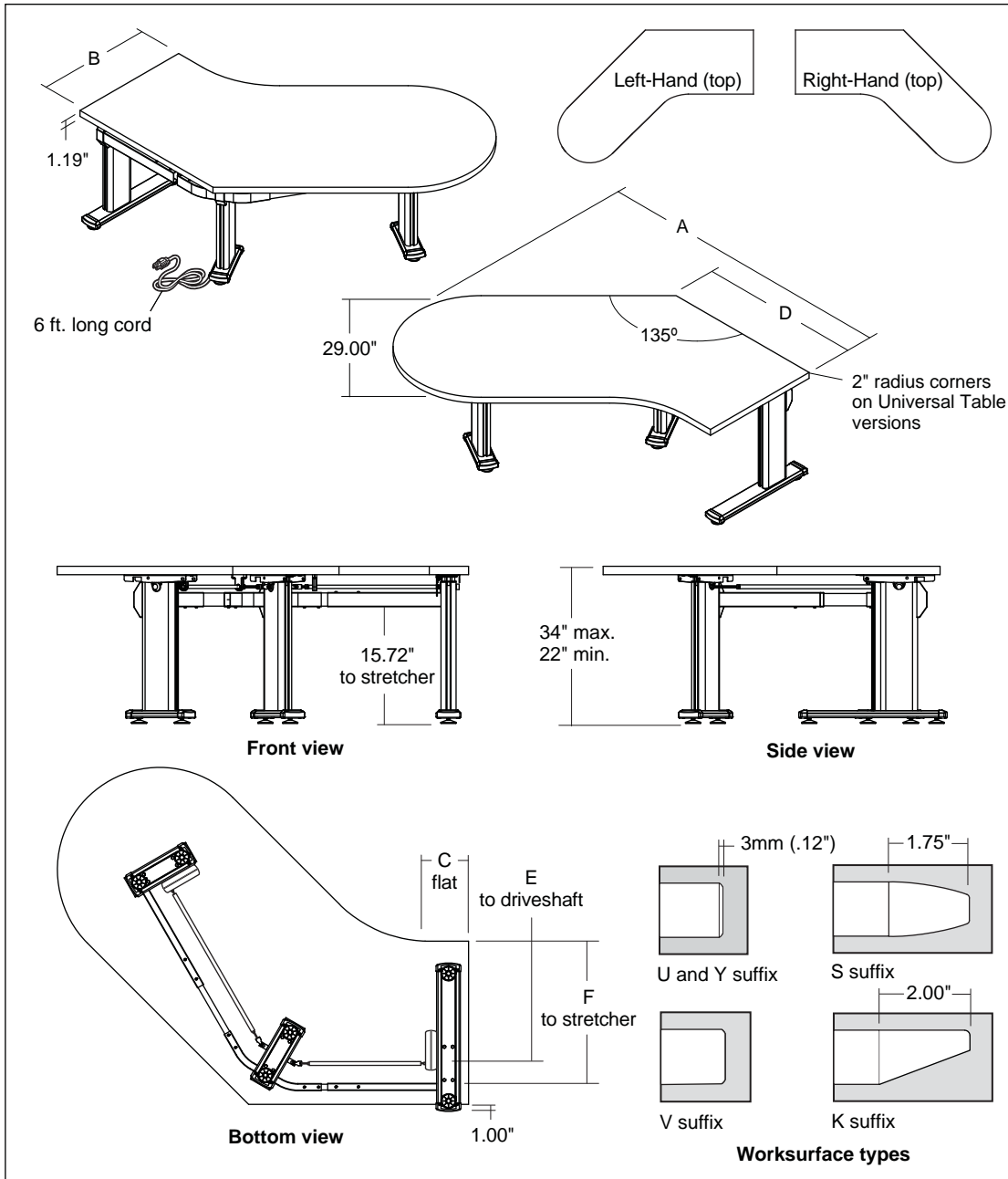
# Series 5 Adjustable Tables

## Dimensioned Line Drawings Bubble Jetty Tables

| Style No.         | Dim. A | Dim. B | Dim. C | Dim. D | Dim. E | Dim. F |
|-------------------|--------|--------|--------|--------|--------|--------|
| <b>Left-Hand</b>  |        |        |        |        |        |        |
| A5JL642923        | 64.00" | 23.00" | 11.50" | 37.00" | 16.00" | 18.15" |
| A5JL702923        | 70.00" | 23.00" | 17.50" | 43.00" | 16.00" | 18.15" |
| A5JL762923        | 76.00" | 23.00" | 23.50" | 49.00" | 16.00" | 18.15" |
| <b>Right-Hand</b> |        |        |        |        |        |        |
| A5JR642329        | 64.00" | 23.00" | 11.50" | 37.00" | 16.00" | 18.15" |
| A5JR702329        | 70.00" | 23.00" | 17.50" | 43.00" | 16.00" | 18.15" |
| A5JR762329        | 76.00" | 23.00" | 23.50" | 49.00" | 16.00" | 18.15" |
| A5JR642929        | 64.00" | 29.00" | 17.50" | 37.00" | 17.55" | 20.60" |
| A5JR702929        | 70.00" | 29.00" | 23.50" | 43.00" | 17.55" | 20.60" |
| A5JR762929        | 76.00" | 29.00" | 29.50" | 49.00" | 17.55" | 20.60" |

Note: Add the following suffixes to specify worksurface type:

- "U" for Universal Table
- "Y" for Universal Systems
- "K" for Knife Edge
- "S" for Urethane Profile
- "V" for Wood Veneer Profile



features



construction



materials



print this page