

# slatshelves

and letter trays



A Steelcase Company



## Vertical space becomes productive space.

Details offers Slatshelves and Letter Trays in portrait and landscape configurations.

More can be organized and stored while less workspace is occupied by overhanging tools.





Amazing how something so seemingly basic does so much to expand a worker's workspace, improve productivity, and recapture workspace dollars.



Slatshelves handle weight of printer, fax machine, postage meter to help organize copyroom.



12" Slatshelf on Saltwall



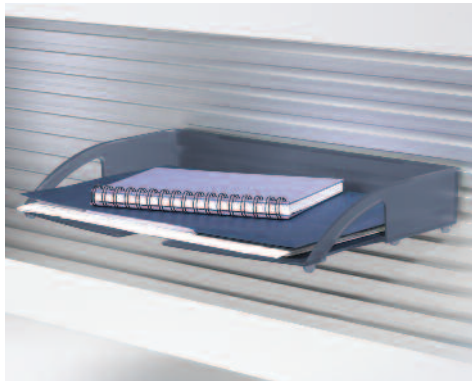
12" Slatshelf on Saltwall

## Slatshelves

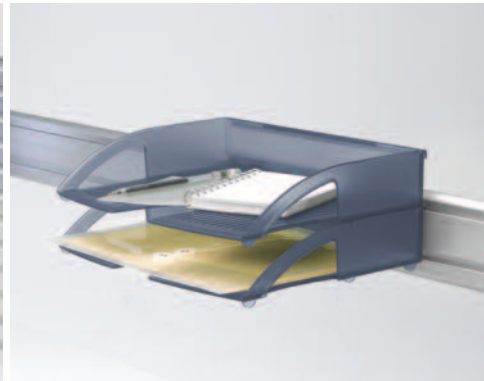
- Provides supplementary worksurface space to help filers and pilers organize their "active" and "anticipated" work
- Categorizes binders full of information
- Enhances workspace personalization
- Handles large office equipment: fax machine, printer, postage meter
- Handy trough keeps pens/pencils within easy reach
- Optional re-writable wet erase label inserts to help categorize information for quick reference are available



Portrait Letter Tray - Freestanding



Landscape Legal Tray on Slatwall



Landscape Letter Tray on SlatRail

## Letter Trays

- Stackable trays
- Ideal for sorting files or projects
- Accommodates letter, legal and A4 filing
- Holds up to 7 lbs. of material per tray
- Sturdy, interlocking construction allows stacking up to four high



Obligatory and important basic feature information.

### Slatshelves

- Ideal for sorting files or projects
- Supports a larger office phone or office equipment
- Accommodates letter, legal and A4 filing
- Accommodates SOTO™ freestanding boxes
- Provides convenient place for off-the-worksurface reference material
- Handy trough keeps pens and pencils within reach
- Cable access opening provides easy feed through for small office equipment
- Available in two depths and three widths
- Optional dividers are available for supporting binders, CDs, books
- Holds up to 40 lbs. of material per shelf

### Specifying Hints

- 18" and 12" wide mounts on Slatwall or SlatRail
- 24" wide mounts on Slatwall or SlatRail (except 24" wide Slatwall Tile or SlatRail)
- Shelf should be mounted 18" above the worksurface when installing Underline light
- 12" wide Slatshelf does not support an Underline light

### Slatshelf Dividers

- Handed dividers support binders, CDs and other reference materials
- Open sides provide easy viewing and identification of contents
- Attaches into back wall of Slatshelf

### Slatshelf Labels

- Three reusable, wet-erase label inserts for labeling work
- Label holder also accommodates 1/5 hanging folder tab inserts
- Clips to the front edge of the Slatshelf

---

### 10" or 12" Portrait Letter Tray

- 2½"-high stackable trays
- Ideal for sorting files or projects
- Accommodates letter, legal and A4 filing
- Holds up to 7 lbs. of material per tray
- Sturdy, interlocking construction allows stacking up to four high

### 15" Landscape Legal Tray

- 2½"-high stackable trays
- Ideal for sorting files or projects in landscape orientation
- Accommodates letter, legal, A4 filing and Fedex® envelopes
- Holds up to 7 lbs. of material per tray
- Sturdy, interlocking construction allows stacking up to four high

### Specifying Hint

- Mounts on Slatwall and SlatRail, or can be freestanding.

### Style Numbers/Descriptions

#### WSS12L

12" wide Slatshelf - Landscape  
W12 x H2¾ x D10½

#### WSS18L

18" wide Slatshelf - Landscape  
W18 x H2¾ x D10½

#### WSS18P

18" wide Slatshelf - Portrait  
W18 x H2¾ x D12½

#### WSS24L

24" wide Slatshelf - Landscape  
W24 x H2¾ x D10½

#### WSS24P

24" wide Slatshelf - Portrait  
W24 x H2¾ x D12½

#### R04494DSR

Mounting hardware for Underline lights

### Slatshelf Color Finishes

Black, Champagne, Pewter

#### WSSD

Slatshelf Dividers  
H3 x D8¾  
Polar Gray

#### WSSD

Slatshelf Labels  
W2 x H¾ x D¾  
Frost

---

#### WLTS

10" Portrait Letter Tray  
W10 x H2½ x D12½

#### WLT12L

12" Portrait Letter Tray  
W12½ x H2½ x D10

#### WLG15L

15" Landscape Legal Tray  
W15½ x H2½ x D10

### Letter Tray Color Finishes

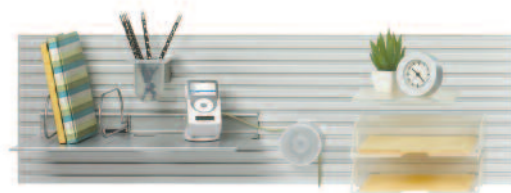
Amber, Arctic White, Black, Frost, Rain



These products have been certified for their material content, recyclability, and manufacturing characteristics.

[c2ccertified.com](http://c2ccertified.com)

Organizational logic and ergonomic well-being.



For further information, please go to the Details website [www.details-worktools.com](http://www.details-worktools.com) or call 800.833.0411  
Or visit [store.steelcase.com](http://store.steelcase.com).

P.O. Box 1967 / CD-5E Grand Rapids, MI 49501-1967

©2010 Steelcase Inc. All rights reserved. 2/10